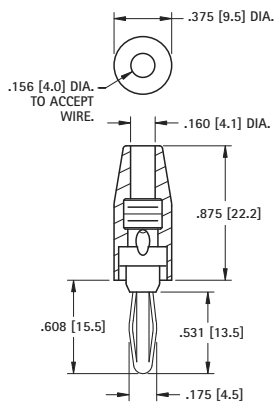


## SOLDERLESS CONNECTION



.175 (4.5)  
Plug



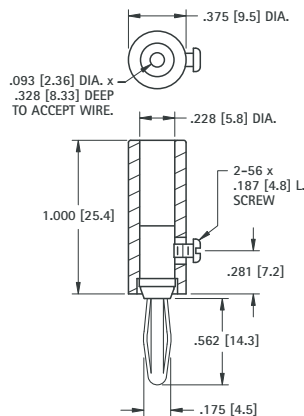
**MATERIAL:**  
Spring: Nickel Silver  
Body: Brass, Nickel Plate  
Handle: Nylon

CAT. NO.	COLOR
6078	RED
6079	BLACK

## SOLDERLESS WITH SET SCREW



.175 (4.5)  
Plug



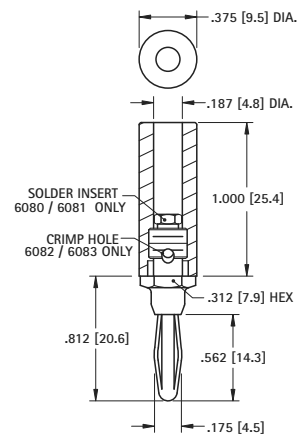
**MATERIAL:**  
Spring: Nickel Silver  
Body: Brass, Nickel Plate  
Handle: Nylon

CAT. NO.	COLOR
6084	RED
6085	BLACK

## SOLDERLESS CONNECTION



.175 (4.5)  
Plug



**MATERIAL:**  
Spring: Phospor Bronze  
Body: Brass, Nickel Plate  
Handle: Nylon

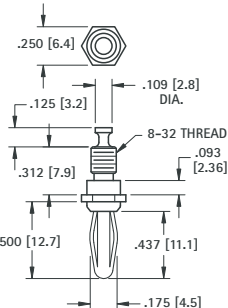
RED CAT. NO.	BLACK CAT. NO.	WIRE CONNECTION
6080	6081	SOLDER
6082	6083	SOLDERLESS

## EXTERNAL THREAD

### SOLDER LUG



.175 (4.5)  
Plug



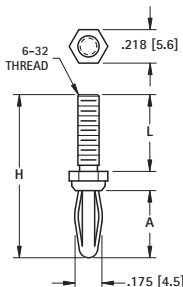
**MATERIAL:**  
Spring: Beryllium Copper  
Body: Brass, Nickel Plate

CAT. NO. 652

### FOUR LEAF SPRING



.175 (4.5)  
Plug



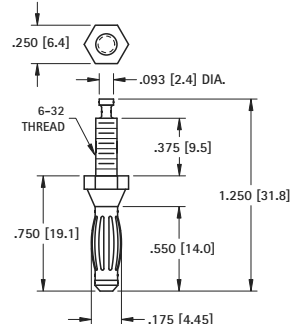
**MATERIAL:**  
Spring: Beryllium Copper (Cat. No. 653)  
Spring: Phospor Bronze (Cat. No. 654, 655)  
Body: Brass, Nickel Plate

CAT. NO.	H	L	A
653	1.062 (27.0)	.500 (12.7)	.437 (11.1)
654	.937 (24.7)	.188 (4.8)	.550 (14.0)
655	1.250 (31.8)	.500 (12.7)	.550 (14.0)

### BARREL SPRING



.175 (4.5)  
Plug



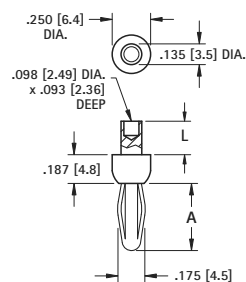
**MATERIAL:**  
Spring: Beryllium Copper  
Body: Brass, Nickel Plate

CAT. NO. 657

## STANDARD RIVET



.175 (4.5)  
Plug



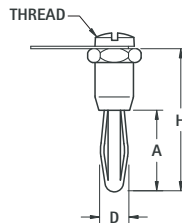
**MATERIAL:**  
Four Leaf Spring: Phosphor Bronze,  
\*Barrel Spring, Beryllium Copper  
Body: Brass, Nickel Plate

CAT. NO.	L	A	SPRING
552-3	.187 (4.7)	.437 (11.1)	4 leaf
658*	.187 (4.7)	.550 (14.0)	barrel
552-4	.218 (5.5)	.437 (11.1)	4 leaf

## INTERNAL THREAD



Supplied with screw and lug  
Unassembled



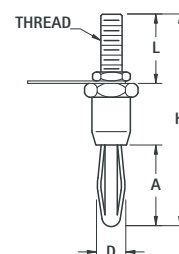
**MATERIAL:**  
Four Leaf Spring: Phosphor Bronze,  
\*Barrel Spring, Beryllium Copper  
Body: Brass, Nickel Plate

CAT. NO.	D	A	H	THREAD	SPRING
6072	.175 (4.4)	.437 (11.1)	.960 (24.4)	6-32	4 leaf
659*	.175 (4.4)	.550 (14.0)	.960 (24.4)	6-32	barrel
6073	.218 (5.5)	.437 (11.1)	1.120 (28.4)	10-32	4 leaf

## EXTERNAL THREAD



Supplied with nut and lug  
Unassembled



**MATERIAL:**  
Spring: Phosphor Bronze  
Body: Brass, Nickel Plate

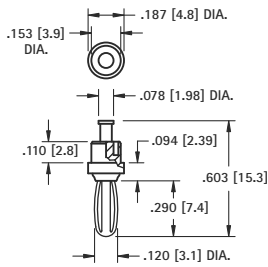
CAT. NO.	D	A	H	L	THREAD
6074-1	.175 (4.5)	.531 (13.5)	1.125 (28.6)	.375 (9.5)	6-32
6074-2	.175 (4.5)	.531 (13.5)	1.500 (38.1)	.750 (19.1)	6-32
6075	.300 (7.5)	.750 (19.1)	1.750 (44.5)	.625 (15.9)	1/4-28

# MINIATURE PLUGS

## SWAGE MOUNT



.120 (3.0)  
Plug



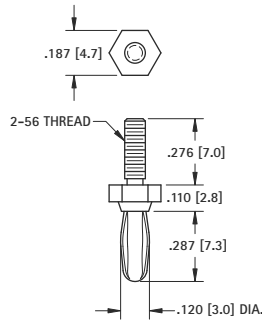
**MATERIAL:**  
**Spring:** Beryllium Copper  
**Body:** Brass, Silver Plate

**CAT. NO. 452**

## THREADED



**CAT. NO. 450**

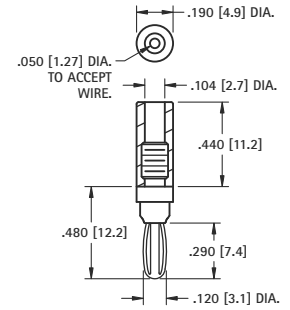


**MATERIAL:**  
**Spring:** Beryllium Copper, Nickel Plate  
**Body:** Brass, Silver Plate

## SOLDER CONNECTION



.120 (3.0)  
Plug



CAT. NO.	COLOR
6076	RED
6077	BLACK
451	NONE

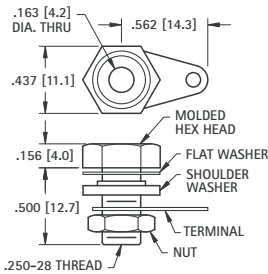
**MATERIAL:**  
**Spring:** Beryllium Copper, Nickel Plate  
**Body:** Brass, Nickel Plate  
**Handle:** Nylon

# BANANA JACKS

## INSULATED SOLDER CONNECTION



Accepts  
.175 (4.5)  
Plug



Supplied with hardware  
Unassembled

CAT. NO.	HEAD COLOR
6093	RED
6094	BLACK

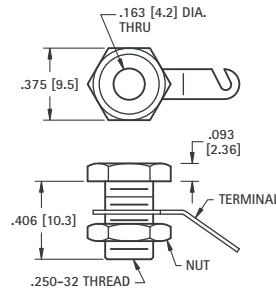
**MATERIAL:**  
**Body:** Brass, Nickel Plate  
**Terminal:** Copper, Tinned  
**Hex Head:** Phenolic

## NON-INSULATED RECESSED HEAD

Fits panel up to .312 (7.9)



Accepts  
.175 (4.5)  
Plug



Supplied with nut and lug.  
Unassembled

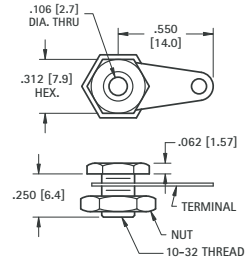
**CAT. NO. 6095**

**MATERIAL:**  
**Current Rating:** 15 Amps  
**Body:** Brass, Nickel Plate  
**Terminal:** Brass, Tin Plate

## NON-INSULATED MINIATURE JACK



Accepts  
.120 (3.0)  
Plug



Supplied with lug and nut.  
Unassembled

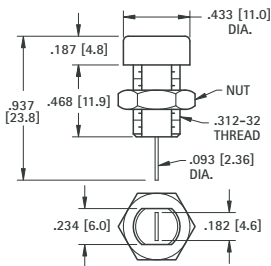
**CAT. NO. 6090**

**MATERIAL:**  
**Body:** Brass, Nickel Plate  
**Terminal:** Copper, Tinned

## FULLY INSULATED



Accepts  
.175 (4.5)  
Plug



CAT. NO.	COLOR
6091	RED
6092	BLACK

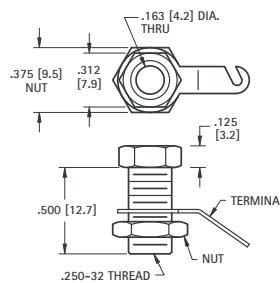
**MATERIAL:**  
**Body:** Nylon  
**Contact:** Brass, Tin Plate

## NON-INSULATED STANDARD HEAD

Fits panel up to .375 (9.6)



Accepts  
.175 (4.5)  
Plug



Supplied with nut and lug.  
Unassembled

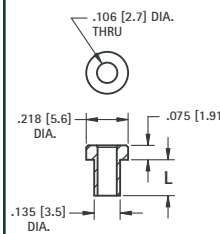
**CAT. NO. 6096**

**MATERIAL:**  
**Current Rating:** 15 Amps  
**Body:** Brass, Nickel Plate  
**Terminal:** Brass, Tin Plate

## NON-INSULATED

### MINIATURE

Accepts  
.120 (3.0)  
Plug

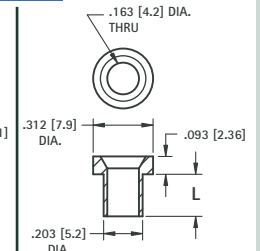


**MATERIAL:**  
Brass, Tin Plate

CAT. NO.	L
476-2	.125 (3.2)
476-3	.165 (4.2)
476-4	.187 (4.7)

### STANDARD

Accepts  
.175 (4.5)  
Plug



**MATERIAL:**  
Brass, Nickel Plate

CAT. NO.	L
575-4	.218 (5.5)
575-6	.265 (6.7)
575-8	.350 (8.9)