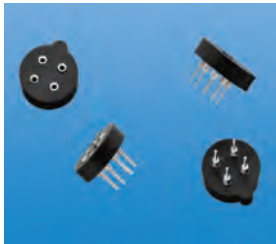


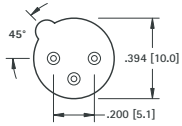
SOCKETS FOR TO-5 & TO-100



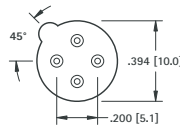
Fully molded compact construction. Speeds transistor assembly. Incorporates ultra high quality, closed entry, sleeve type contacts. Accepts .016 (.41) to .020 (.51) diameter leads or .010 (.25) x .018 (.46) rectangular transistor leads.

MATERIAL:
Insulator: Glass Filled Polyester, UL Rated 94V-0
Contact Pin: Brass, Tin Plate
Contact Spring: Beryllium Copper, .000030 min. Gold Plate

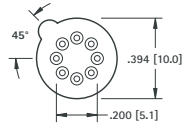
CAT. NO.	FOR	PINS
4590	TO-5	3
4591	TO-5	4
4592	TO-5	8
4593	TO-100	8
4594	TO-100	10



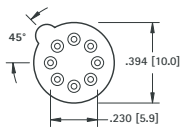
Cat. No. 4590



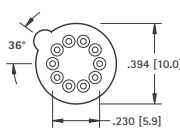
Cat. No. 4591



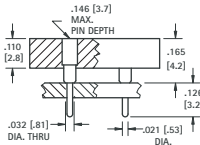
Cat. No. 4592



Cat. No. 4593



Cat. No. 4594

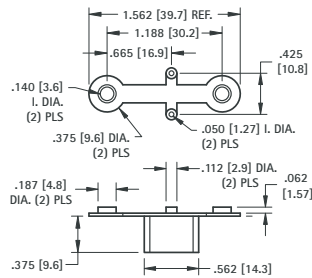


POWER TRANSISTOR MOUNTS

Molded barrier insulators functionally replaces up to six pieces of conventional insulation required with previous methods of mounting power transistors. Built-in barrier eliminates need for sleeving of connections.

NOTE: #6-20 mounting screw available **CAT. NO. 4706**

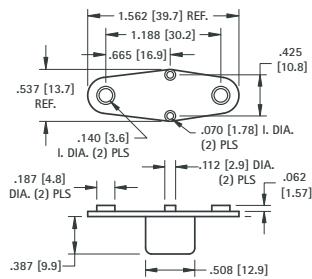
For TO-3 CASES



MATERIAL: Nylon 6/6, UL Rated 94V-2

CAT. NO. 4616

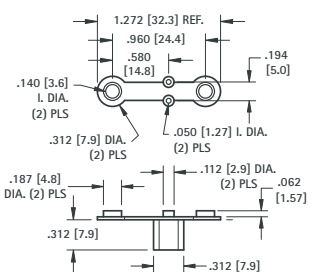
HEAVY DUTY TO-3



MATERIAL: Glass filled Polyester, UL Rated 94V-0

CAT. NO. 4626

For TO-66 CASES



MATERIAL: Nylon 6/6, UL Rated 94V-2

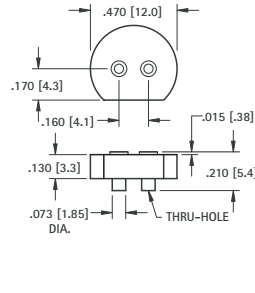
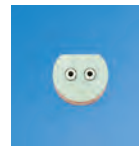
CAT. NO. 4617

"MINI" HALOGEN LAMP SOCKETS

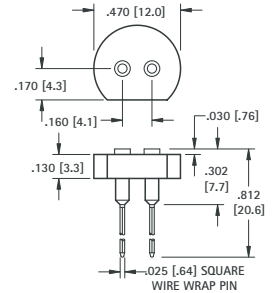
- Accepts .022 (.032) to .032 (.81) diameter Pins or Leads
- The Wire Wrap Pins can be easily bent to achieve a variety of positions

SPECIFICATIONS

Base: Glass Filled LCP; **Contact:** Beryllium Copper, Gold Plate; **Shell:** Brass, Nickel Plate



CAT. NO. 4595

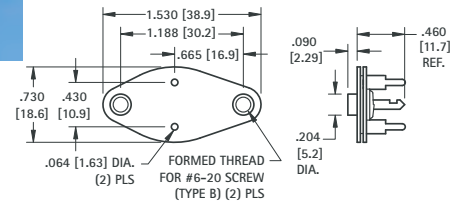


CAT. NO. 4596

TO-3 SOCKET FOR PC BOARDS



Easily assembles onto printed circuit board. Eliminates wiring. Stops on PC terminals provide sufficient spacing between socket and PC board to permit proper assembly of transistor to socket. Can be screwed down tightly to heat sink.

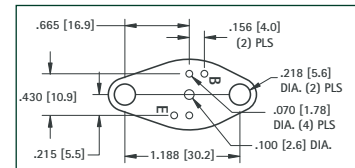


Bottom View Mounting Detail

MATERIAL:

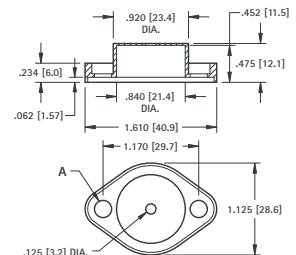
Top Plate: Molded Nylon
Base: Phenolic
Contacts: Brass, Tin Plate
Collector Plate: Steel, Tin Plate

CAT. NO. 4600



NYLON TO-3 CASE COVERS

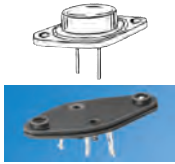
Molded nylon covers easily mount over and insulate the power transistor. Will withstand temperatures to approximately 250°F (107°C).



MATERIAL: Nylon 6/6, UL Rated 94V-2

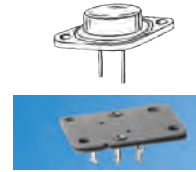
CAT. NO.	FOR	EYELETS INSTALLED	A
4632	TO-3	NONE	.210 (5.4)
4634	TO-3	TWO	.140 (3.6)

SOCKETS FOR TO-3 CASE



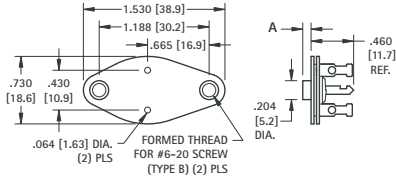
VARIOUS MOLDED BOSS HEIGHTS

MATERIAL:
Base: Phenolic, Grade PBE, Type XP
Contacts: Brass, Tin Plate
Top Plate: Nylon, ASTM-D4066
 Phenolic, Grade PBE, Type XP
 (Cat. No. 4606 only)
Collector Plate: Steel, Tin Plate

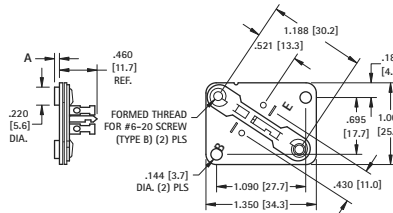


Socket and transistor are assembled to chassis at same time, using the minimum amount of hardware. Top molded boss ensure the transistor leads will be isolated from the chassis. Various boss heights available to accommodate different chassis thicknesses.

Socket is installed onto chassis using eyelets or screws. Transistor is installed afterwards. Assembly and repairs are simplified since socket will stay in place without transistor mounted. Top molded boss or added bushing ensure the transistor leads will be isolated from the chassis. Various boss heights available to accommodate standard chassis thicknesses. Use Cat. No. 4606 and nylon bushings for special chassis thicknesses.



CAT. NO.	A DIM.
4603	.030 (.76)
4602	.045 (1.14)
4601	.090 (2.29)



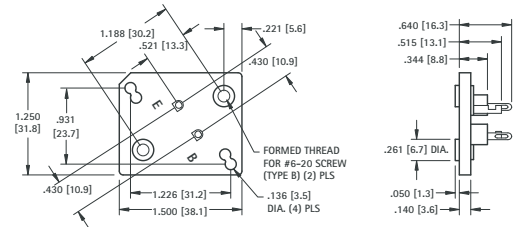
CAT. NO.	A DIM.
4606	NONE
4607	.030 (.76)
4608	.045 (1.14)
4609	.060 (1.52)
4618	.125 (3.2)

FULLY MOLDED TO-3 SOCKET



Pre-assembling the socket to the chassis by eyelets or rivets permits the installation of the semiconductor at a later stage in the assembly. The molded top boss eliminates hardware.

MATERIAL:
Base: Molded Nylon 6/6
Contacts: Brass, Tin Plate
Collector Plate: Steel, Tin Plate

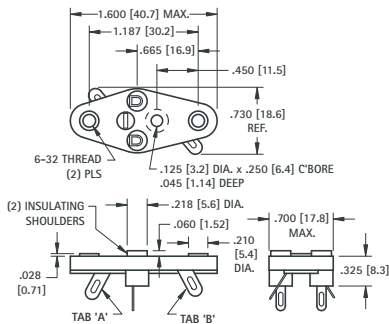


CAT. NO. 4620

HEAVY DUTY SOCKET FOR TO-3 CASE

CHOICE OF SINGLE OR DUAL COLLECTOR SOLDER TABS

Features an all-in-one mounting plate and solder tabs, providing complete electrical isolation of the solder tab connections. Rated 5 Amps DC continuous and 15 Amps DC Intermittent



MATERIAL:
Base: Glass Filled Polyester, UL Rated 94V-0
Contacts: Brass, Tin Plate
Collector Plate: Brass, Tin Plate

With transistor lead-in insulating shoulders

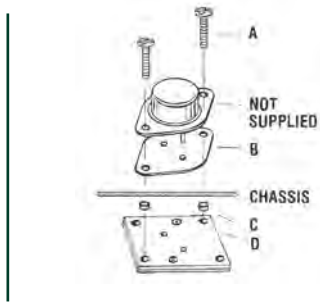
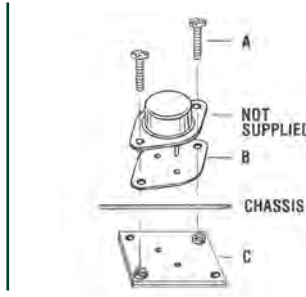
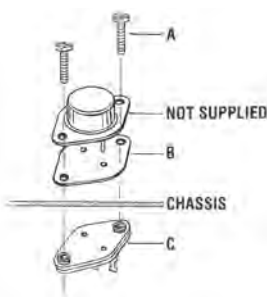
CAT. NO.	WITH TAB
4513	"A" ONLY
4514	"A" & "B"

Less transistor lead-in insulating shoulders

CAT. NO.	WITH TAB
4515	"A" ONLY
4516	"A" & "B"

TO-3 CASE MOUNTING KITS

These socket kits provide everything needed to mount a transistor onto a chassis in one kit. Nylon bushings or boss will insulate transistor leads from chassis. Mica insulator isolates transistor from chassis. Two 6-20 screws included to mount transistor. (Transistor not included)



CAT. NO. 4732 Complete Mounting Kit

ITEM	CAT. NO.	DESCRIPTION	QUANTITY
A	4706	6-20 screws	2
B	4651	Mica Insulator	1
C	4602	Socket	1

CAT. NO. 4733 Complete Mounting Kit

ITEM	CAT. NO.	DESCRIPTION	QUANTITY
A	4706	6-20 screws	2
B	4651	Mica Insulator	1
C	4608	Square Socket	1

CAT. NO. 4734 Complete Mounting Kit

ITEM	CAT. NO.	DESCRIPTION	QUANTITY
A	4706	6-20 screws	2
B	4651	Mica Insulator	1
C	4684	Nylon Bushing	4
D	4606	Square Socket	1

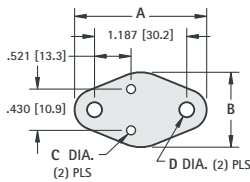
TRANSISTOR INSULATORS

- Rapid Heat Dissipation • High Dielectric Strength • Low Cost

These precision stamped mica insulators provide good thermal conductivity: Excellent thermal resistance 1100°F. (593°C) Dielectric constant of 7 at 1000 KHz. .009 watts per square inch per degree celsius per inch in thickness.

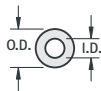
MATERIAL: .003 (.08) ± .001 (.02) Thick Mica

FOR TO-3 CASES



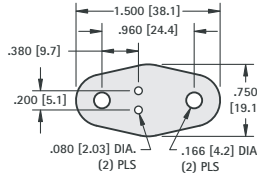
CAT. NO.	A	B	C	D
4651	1.625 (41.3)	1.093 (27.8)	.093 (2.36)	.166 (4.2)
4652	1.560 (39.6)	1.050 (26.7)	.203 (5.15)	.171 (4.4)
4653	1.655 (42.1)	1.063 (27.0)	.166 (4.2)	.166 (4.2)
4636	1.655 (42.1)	1.063 (27.0)	.052 (1.32)	.166 (4.2)
4644	1.655 (42.1)	1.063 (27.0)	.270 (6.9)	.166 (4.2)

FOR THREADED STUD TRANSISTORS



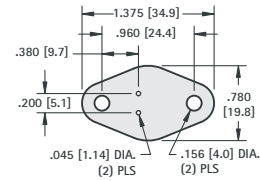
CAT. NO.	ID Inside Dia.	OD Outside Dia.	For Screw Size
4678	.120 (3.1)	.375 (9.5)	4
4679	.144 (3.7)	.375 (9.5)	6
4680	.171 (4.3)	.500 (12.7)	8
4681	.196 (5.0)	.625 (15.9)	10
4682	.260 (6.6)	.750 (19.0)	1/4
4683	.328 (8.3)	.875 (22.2)	5/16

FOR TO-66 CASES

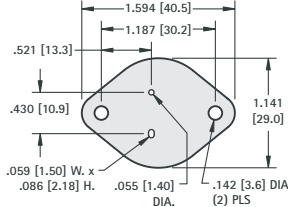


CAT. NO. 4664

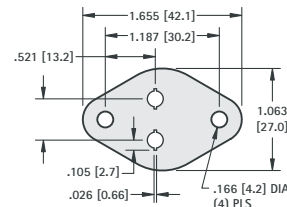
CAT. NO. 4666



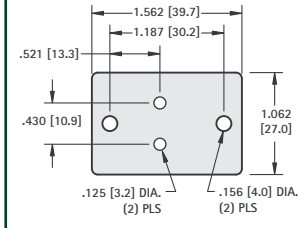
FOR TO-3 CASES



CAT. NO. 4662

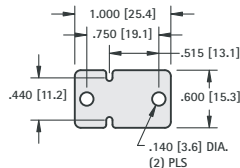


CAT. NO. 4667

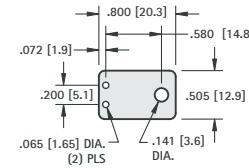


CAT. NO. 4661

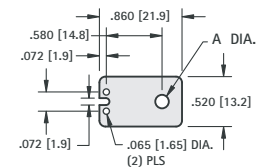
FOR PLASTIC CASE



CAT. NO. 4663



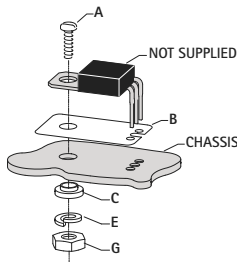
CAT. NO. 4671



CAT. NO.	A
4672	.141 (3.6)
4673	.115 (2.9)

TRANSISTOR MOUNTING KITS

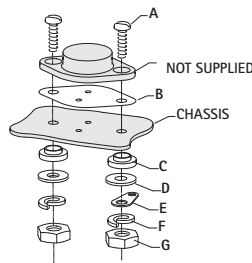
- Complete Kits or Individual Hardware • Pre-Packaged • Uniform Hardware at Low Cost



FOR TO-220 CASE

CAT. NO. 4724 Complete Mounting Kit			
ITEM	CAT. NO.	DESCRIPTION	QTY.
A	4690	4-40 Screw	1
B	4672	Mica Insulator	1
C	3049	Shoulder Washer	1
E	4693	Lockwasher	1
G	4694	4-40 Nut	1

These pre-packaged universal mounting kits provide all the necessary hardware and insulators required to securely mount the semiconductor to the chassis. Purchase the complete kit consisting of all hardware included in one package. Your choice of individual items available in 100 piece packages. Semiconductors customer supplied.

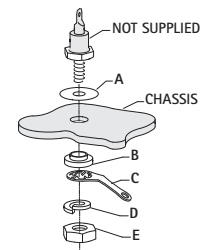


FOR TO-3 CASE

CAT. NO. 4725 Complete Mounting Kit			
ITEM	CAT. NO.	DESCRIPTION	QTY.
A	4696	6-32 Screw	2
B	4651	Mica Insulator	1
C	4698	Shoulder Washer	2
D	4699	Metal Washer	2
E	4004	Solder Terminal	1
F	4700	Lockwasher	2
G	4701	6-32 Nut	2

FOR TO-66 CASE

CAT. NO. 4726 Complete Mounting Kit			
ITEM	CAT. NO.	DESCRIPTION	QTY.
A	4696	6-32 Screw	2
B	4666	Mica Insulator	1
C	4698	Shoulder Washer	2
D	4699	Metal Washer	2
E	4004	Solder Terminal	1
F	4700	Lockwasher	2
G	4701	6-32 Nut	2



FOR DO-4, TO-59, TO-60, TO-62 CASES

CAT. NO. 4729 Complete Mounting Kit			
ITEM	CAT. NO.	DESCRIPTION	QTY.
A	4681	Mica Insulator	1
B	4702	Shoulder Washer	1
C	4704	Solder Terminal	1
D	1477	Lockwasher	1
E	4705	10-32 Nut	1

FOR DO-5, TO-48, TO-61 CASES

CAT. NO. 4730 Complete Mounting Kit			
ITEM	CAT. NO.	DESCRIPTION	QTY.
A	4682	Mica Insulator	1
B	4711	Shoulder Washer	1
C	4712	Solder Terminal	1
D	1476	Lockwasher	1
E	4713	1/4-28 Nut	1