

## REFER TO PAGES 10 & 12 FOR PART DIMENSIONS

NOTE: ALL MOUNTING DIMENSIONS ARE FOR REFERENCE ONLY. PLEASE VERIFY YOUR BATTERY LAYOUT PRIOR TO FABRICATION.

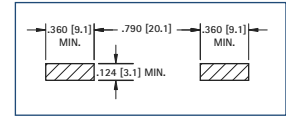


**50**  
**550**

CAT. NO.	"L" DIMENSION	
	For "AAAA" 0.33 (8.4) × 1.67 (42.4)	For "A27" 0.30 (7.6) × 1.10 (28.0)
<b>50</b>	0.89 (22.6)	0.32 (8.1)
<b>550</b>		

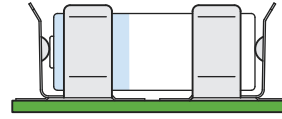


Pad Layout

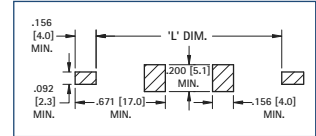


**55**  
**555**

CAT. NO.	"L" DIMENSION		
	For "AAA" 0.41 (10.4) × 1.75 (44.5)	For "N" 0.45 (11.4) × 1.14 (29.0)	For "A23" 0.40 (10.2) × 1.10 (27.9)
<b>55</b>	1.76 (44.7)	1.15 (29.2)	1.11 (28.2)
<b>555</b>			

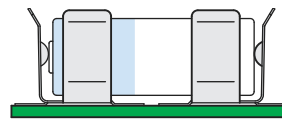


Pad Layout

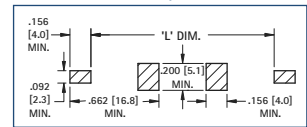


**53**  
**553**

CAT. NO.	"L" DIMENSION		
	For "AA" 0.56 (14.2) × 1.98 (50.3)	For "2/3 A" 0.67 (17.0) × 1.36 (34.5)	For "CR2" 0.60 (15.2) × 1.05 (26.7)
<b>53</b>	2.05 (52.1)	1.38 (35.1)	1.04 (26.4)
<b>553</b>			



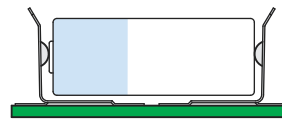
Pad Layout



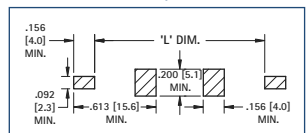
**56**  
**556**  
**57**  
**557**

CAT. NO.	"L" DIMENSION		
	For "AAA" 0.41 (10.4) × 1.75 (44.5)	For "N" 0.45 (11.4) × 1.14 (29.0)	For "A23" 0.4 (10.2) × 1.10 (27.9)
<b>56</b>	1.67 (42.4)	1.07 (27.2)	1.02 (25.9)
<b>556</b>			

CAT. NO.	"L" DIMENSION		
	For "AA" 0.56 (14.2) × 1.98 (50.3)	For "2/3 A" 0.67 (17.0) × 1.36 (34.5)	For "CR2" 0.60 (15.2) × 1.05 (26.7)
<b>57</b>	1.90 (48.3)	1.23 (31.2)	0.97 (24.6)
<b>557</b>			



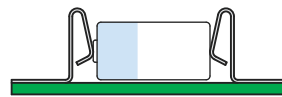
Pad Layout



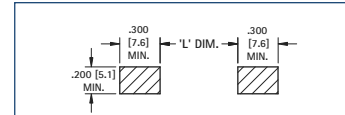
**5231**  
**5331**  
**5230**  
**5330**

CAT. NO.	"L" DIMENSION		
	For "AA" 0.56 (14.2) × 1.98 (50.3)	For "2/3 A" 0.67 (17.0) × 1.36 (34.5)	For "CR2" 0.60 (15.2) × 1.05 (26.7)
<b>5231</b>	2.38 (60.5)	1.71 (43.4)	1.53 (24.6)
<b>5331</b>			

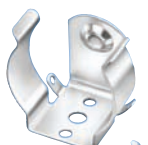
CAT. NO.	"L" DIMENSION				
	For "AAA" 0.41 (10.4) × 1.75 (44.5)	For "N" 0.45 (11.4) × 1.14 (29.0)	For "A23" 0.40 (10.2) × 1.10 (27.9)	For "A27" 0.30 (7.6) × 1.10 (27.9)	For "AAAA" 0.33 (8.4) × 1.67 (42.4)
<b>5230</b>	1.96 (49.8)	1.35 (34.3)	1.31 (33.3)	1.31 (33.3)	1.86 (47.2)
<b>5330</b>					



Pad Layout



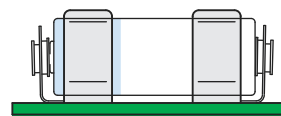
"L" dimensions reflect initial insertion deflection.



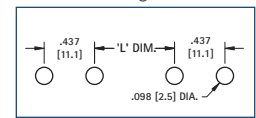
**86**  
**89**  
**99**

CAT. NO.	"L" DIMENSION		
	For "AA" 0.56 (14.2) × 1.98 (50.3)	For "C" 1.00 (25.4) × 1.97 (50.0)	For "D" 1.30 (33.0) × 2.42 (61.5)
<b>99</b>	0.91 (23.0)	—	—
<b>100</b>	—	—	—
<b>86</b>	—	0.91 (23.0)	—
<b>87</b>	—	—	—
<b>88</b>	—	—	1.19 (30.2)
<b>89</b>	—	—	—

**87**  
**88**  
**100**



Mounting Detail



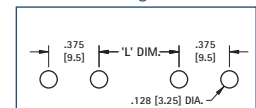
**206**

CAT. NO.	"L" DIMENSION		
	For "AA" 0.56 (14.2) × 1.98 (50.3)	For "C" 1.00 (25.4) × 1.97 (50.0)	For "D" 1.30 (33.0) × 2.42 (61.5)
<b>206</b>	1.10 (27.9)	—	—
<b>207</b>	—	0.81 (20.6)	—
<b>208</b>	—	—	1.25 (31.8)

**207**



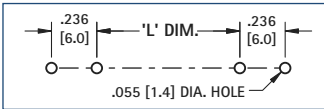
Mounting Detail



# REFER TO PAGE 11 FOR PART DIMENSIONS

NOTE: ALL MOUNTING DIMENSIONS ARE FOR REFERENCE ONLY. VERIFY YOUR BATTERY LAYOUT PRIOR TO FABRICATION.

Mounting Detail

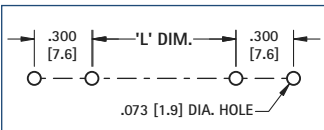


CAT. NO.	"L" DIMENSION	
	For "AAAA"	For "A27"
51	0.33 (8.4) × 1.67 (42.4)	0.300 (7.6) × 1.10 (27.9)



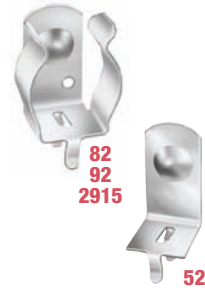
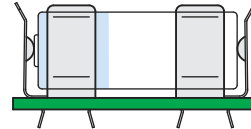
51

Mounting Detail



CAT. NO.	"L" DIMENSION		
	For "AAA"	For "N"	For "A23"
82	0.41 (10.4) × 1.75 (44.5)	0.45 (11.4) × 1.14 (29.0)	0.40 (10.2) × 1.10 (27.9)

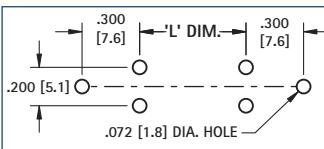
CAT. NO.	"L" DIMENSION		
	For "AA"	For "2/3 A"	For "CR2"
52	0.56 (14.2) × 1.98 (50.3)	0.67 (17.0) × 1.36 (34.5)	0.60 (15.2) × 1.05 (26.7)
92	1.32 (33.5)	-	0.39 (9.9)
2915	1.32 (33.5)	-	0.39 (9.9)



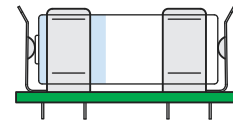
82  
92  
2915

52

Mounting Detail

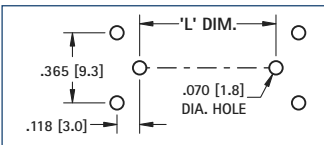


CAT. NO.	"L" DIMENSION			
	For "18650"	For "18350"	For "2/3 A"	For "17500"
54	0.71 (18.4) × 2.56 (65.0)	0.73 (18.5) × 1.38 (35.0)	0.67 (17.0) × 1.36 (34.5)	0.67 (17.0) × 1.97 (50.0)

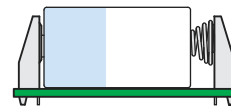


54

Mounting Detail



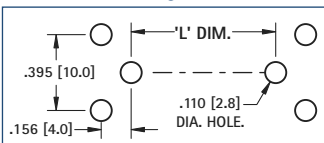
CAT. NO.	"L" DIMENSION		
	For "2/3 A"	For "CR2"	For "AA"
595 with 628	0.67 (17.0) × 1.36 (34.5)	0.60 (15.2) × 1.05 (26.7)	0.56 (14.2) × 1.98 (50.3)



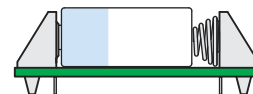
595

628

Mounting Detail



CAT. NO.	"L" DIMENSION		
	For "AAA"	For "N"	For "A23"
637 with 629	0.41 (10.4) × 1.75 (44.5)	0.45 (11.4) × 1.14 (29.0)	0.40 (10.2) × 1.10 (27.9)

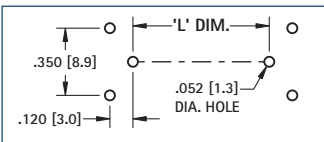


637



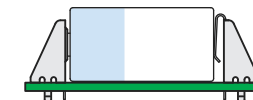
629

Mounting Detail



CAT. NO.	"L" DIMENSION		
	For "AA"	For "2/3 A"	For "CR2"
596 with 599	0.56 (14.2) × 1.98 (50.3)	0.67 (17.0) × 1.36 (34.5)	0.60 (15.2) × 1.05 (26.7)
590 with 599	2.07 (52.6)	N/A	1.14 (29.0)
591 with 591	1.83 (46.5)	1.22 (31.0)	1.18 (30.0)
591 with 591	1.91 (48.5)	1.30 (33.0)	1.26 (32.0)

CAT. NO.	"L" DIMENSION		
	For "AAA"	For "N"	For "A23"
596 with 599	0.41 (10.4) × 1.75 (44.5)	0.45 (11.4) × 1.14 (29.0)	0.40 (10.2) × 1.10 (27.9)
591 with 591	1.83 (46.5)	1.22 (31.0)	1.18 (30.0)
591 with 591	1.91 (48.5)	1.30 (33.0)	1.26 (32.0)



596  
597



590  
591

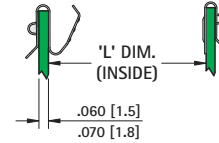
"L" dimensions reflect initial insertion deflection.

## REFER TO PAGES 14 & 15 FOR PART DIMENSIONS

NOTE: ALL MOUNTING DIMENSIONS ARE FOR REFERENCE ONLY. PLEASE VERIFY YOUR BATTERY LAYOUT PRIOR TO FABRICATION.



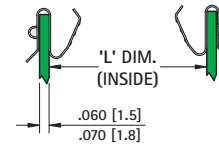
CAT. NO.	FIG. NO.	L DIMENSION				
		For "AAAA" 0.33 (8.4) × 1.67 (42.4)	For "A 27" 0.30 (7.6) × 1.10 (27.9)	For "A23" 0.40 (10.2) × 1.10 (27.9)	For "AAA" 0.41 (10.4) × 1.75 (44.5)	For "N" 0.45 (11.4) × 1.14 (29.0)
204 with 238	1	1.79 (45.5)	1.22 (31.0)	1.22 (31.0)	1.87 (47.5)	1.26 (32.0)
204,238 with 295, 296	1	N/A	N/A	N/A	1.87 (47.5)	N/A
202 with 294	1	N/A	N/A	N/A	1.87 (47.5)	N/A
204 with 204	2	1.89 (48.0)	1.32 (33.5)	1.32 (33.5)	1.97 (50.0)	1.36 (34.5)
204 with 202	2	N/A	N/A	N/A	1.97 (50.0)	N/A



**Fig. 1 Spring-Button**  
L dimensions reflect initial insertion deflection.

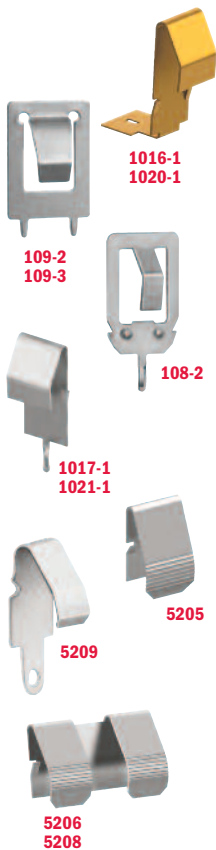


CAT. NO.	FIG. NO.	L DIMENSION		
		For "AA" 0.56 (14.2) × 1.98 (50.3)	For "CR2" 0.60 (15.2) × 1.05 (26.7)	For "2/3 A" 0.67 (17.0) × 1.24 (31.5)
209 with 228	1	2.13 (54.1)	12.0 (30.5)	1.46 (37.1)
209, 228 with 290, 291	1	2.13 (54.1)	N/A	N/A
288, 210 with 292	1	2.13 (54.1)	N/A	N/A
209 with 209	2	2.27 (57.7)	1.34 (34.0)	1.60 (40.6)
209 with 288, 210	2	2.27 (57.7)	N/A	N/A



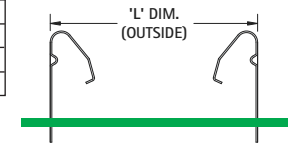
**Fig. 2 Spring-Spring**  
L dimensions reflect initial insertion deflection.

\*Built in circuit protection may increase length of battery, check battery specifications for exact battery length



CAT. NO.	FIG. NO.	L DIMENSION					
		For "AA" 0.56 (14.2) × 1.98 (50.3)	For "CR2" 0.60 (15.2) × 1.05 (26.7)	For "2/3 A" 0.67 (17.0) × 1.24 (31.5)	For "17500" 0.67 (17.0) × 1.97 (50.0)	For "18350" 0.71 (18.0) × 1.38 (35.0)	For "18650" 0.71 (18.0) × 2.56 (65.0)
5205	3	2.28 (57.9)	1.35 (34.3)	1.61 (40.9)	2.27 (57.7)	1.68 (42.7)	2.86 (72.6)
5205 with 5206	3	2.28 (57.9)	N/A	N/A	N/A	N/A	N/A
5209	3	2.34 (59.4)	1.41 (35.8)	1.67 (42.4)	2.33 (59.2)	1.74 (44.2)	2.92 (74.2)
5209 with 5208	3	2.34 (59.4)	N/A	N/A	N/A	N/A	N/A
1016-1	4	2.19 (55.6)	1.26 (32.0)	1.52 (38.6)	2.18 (55.4)	1.59 (40.4)	2.77 (70.4)
1017-1	3	2.19 (55.6)	1.26 (32.0)	1.52 (38.6)	2.18 (55.4)	1.59 (40.4)	2.77 (70.4)

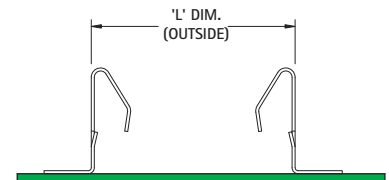
\*Built in circuit protection may increase length of battery, check battery specifications for exact battery length



**Fig. 3 PC Mount**  
L dimensions reflect initial insertion deflection.

CAT. NO.	FIG. NO.	L DIMENSION				
		For "AAAA" 0.33 (8.4) × 1.67 (42.4)	For "A27" 0.30 (7.6) × 1.10 (27.9)	For "A23" 0.40 (10.2) × 1.10 (27.9)	For "AAA" 0.41 (10.4) × 1.75 (44.5)	For "N" 0.45 (11.4) × 1.14 (29.0)
1021-1	3	1.88 (47.8)	1.31 (33.3)	1.31 (33.3)	1.96 (49.8)	1.35 (34.3)
1020-1	4	1.88 (47.8)	1.31 (33.3)	1.31 (33.3)	1.96 (49.8)	1.35 (34.3)

CAT. NO.	FIG. NO.	L DIMENSION			
		For "AAA" 0.41 (10.4) × 1.75 (44.5)	For "N" 0.45 (11.4) × 1.14 (29.0)	For "AA" 0.56 (14.2) × 1.98 (50.3)	For "CR2" 0.60 (15.2) × 1.05 (26.7)
108-2	3	1.99 (50.5)	1.38 (35.0)	2.22 (56.4)	1.29 (32.8)



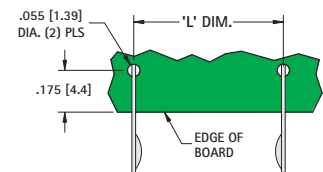
**Fig. 4 Surface Mount**  
L dimensions reflect initial insertion deflection.

CAT. NO.	FIG. NO.	L DIMENSION									
		For "AA" 0.56 (14.2) × 1.98 (50.3)	For "CR2" 0.60 (15.2) × 1.05 (26.7)	For "2/3 A" 0.67 (17.0) × 1.24 (31.5)	For "17500" 0.67 (17.0) × 1.97 (50.0)	For "18350" 0.71 (18.0) × 1.38 (35.0)	For "18650" 0.71 (18.0) × 2.56 (65.0)	For "C" 0.99 (25.0) × 1.97 (50.0)	For "26650" 1.02 (26.0) × 2.56 (65.0)	For "D" 1.30 (33.0) × 2.24 (56.9)	
1107-1	3	2.19 (55.6)	1.26 (32.0)	1.52 (38.6)	2.18 (55.4)	1.59 (40.4)	2.77 (70.4)	2.18 (55.4)	2.77 (70.4)	2.45 (62.2)	
109-2	3	2.22 (56.4)	1.29 (32.8)	1.55 (39.4)	2.21 (56.1)	1.62 (41.1)	2.80 (71.1)	N/A	N/A	N/A	
109-3	3	N/A	N/A	N/A	N/A	N/A	N/A	2.21 (56.1)	1.62 (41.1)	2.48 (63.0)	

\*Built in circuit protection may increase length of battery, check battery specifications for exact battery length



CAT. NO.	FIG. NO.	L DIMENSION				
		For "AAAA" 0.33 (8.4) × 1.67 (42.4)	For "A27" 0.30 (7.6) × 1.10 (27.9)	For "A23" 0.40 (10.2) × 1.10 (27.9)	For "AAA" 0.41 (10.4) × 1.75 (44.5)	For "N" 0.45 (11.4) × 1.14 (29.0)
230-1	5	1.65 (42.4)	1.08 (27.9)	1.08 (27.9)	1.73 (43.9)	1.12 (29.0)



**Fig. 5 Off-Board Mount**

# REFER TO PAGE 16 THRU 18 FOR PART DIMENSIONS

NOTE: ALL MOUNTING DIMENSIONS ARE FOR REFERENCE ONLY. VERIFY YOUR BATTERY LAYOUT PRIOR TO FABRICATION.

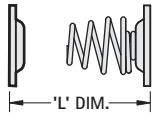


Fig. 1

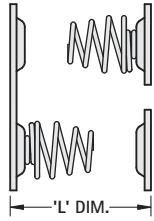


Fig. 2



5203



5225



5204



5226



5213, 5214

CAT. NO.	"L" DIMENSION					
	FIG. NO.	For "AAAA" 0.33 (8.4) × 1.67 (42.4)	For "A27" 0.30 (7.6) × 1.10 (27.9)	For "A23" 0.40 (10.2) × 1.10 (27.9)	For "AAA" 0.41 (10.4) × 1.75 (44.5)	For "N" 0.45 (11.4) × 1.14 (29.0)
5203 with 5225	1	1.87 (47.5)	1.30 (33.0)	1.30 (33.0)	1.95 (49.5)	1.34 (34.0)
5204 with 5226	1	1.87 (47.5)	1.30 (33.0)	1.30 (33.0)	1.95 (49.5)	1.34 (34.0)
5214,5213 with 5203, 5225	2	N/A	N/A	N/A	1.95 (49.5)	N/A

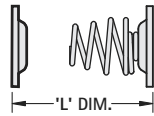


Fig. 1

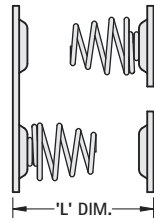


Fig. 2



5201, 5220



5202, 5222



5210, 5211  
5218, 5219



5212



5219, 5223



5221, 5224



5227



5228

CAT. NO.	"L" DIMENSION						
	FIG. NO.	For "AA" 0.56 (14.2) × 1.98 (50.3)	For "CR2" 0.60 (15.2) × 1.05 (26.7)	For "2/3 A" 0.67 (17.0) × 1.36 (34.5)	For "17500" 0.67 (17.0) × 1.97 (50.0)	For "18350" 0.71 (18.0) × 1.38 (35.0)	For "18650" 0.71 (18.0) × 2.56 (65.0)
5202 with 5224	1	2.23 (56.6)	1.30 (33.0)	1.61 (40.9)	2.22 (56.5)	1.63 (41.4)	2.81 (71.4)
5222 with 5221	1	2.24 (56.9)	1.31 (33.3)	1.62 (41.1)	2.23 (56.6)	1.64 (41.7)	2.82 (71.6)
5201 with 5223	1	2.24 (56.9)	1.31 (33.3)	1.62 (41.1)	2.23 (56.6)	1.64 (41.7)	2.82 (71.6)
5220 with 5219	1	2.24 (56.9)	1.31 (33.3)	1.62 (41.1)	2.23 (56.6)	1.64 (41.7)	2.82 (71.6)
5201, 5223 with 5210, 5211	2	2.24 (56.9)	N/A	N/A	N/A	N/A	N/A
5222, 5221 with 5212	2	2.24 (56.9)	N/A	N/A	N/A	N/A	N/A
5220, 5219 with 5217, 5218	2	2.24 (56.9)	N/A	N/A	N/A	N/A	N/A
5227 with 5228	2	2.24 (56.9)	N/A	N/A	N/A	N/A	N/A

\*Built in circuit protection may increase length of battery, check battery specifications for exact battery length

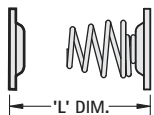


Fig. 1

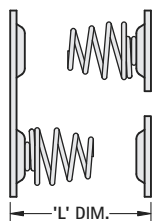


Fig. 2



5240



5241



5242



5250



5251



5252, 5253

CAT. NO.	"L" DIMENSION			
	FIG. NO.	For "C" 0.99 (25.0) × 1.97 (50.0)	For "26650" 1.02 (26.0) × 2.56 (65.0)	For "D" 1.30 (33.0) × 2.24 (56.9)
5220 with 5241	1	2.25 (57.2)	3.07 (78.0)	N/A
5250 with 5251	1	N/A	N/A	2.75 (69.9)
5240, 5241 with 5242	2	2.25 (57.2)	N/A	N/A
5250, 5251 with 5252, 5253	2	N/A	N/A	2.75 (69.9)

\*Built in circuit protection may increase length of battery, check battery specifications for exact battery length

BATTERY CONTACTS LAYOUT & MOUNTING DETAILS