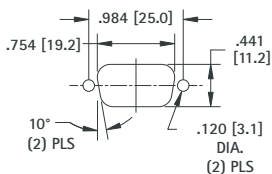


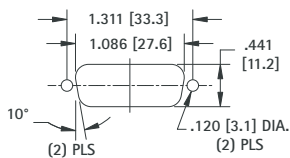
STANDARD PANEL CUTOUTS

BRACKET CUTOUTS & MARKINGS

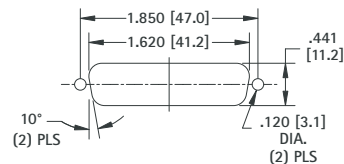
TYPE 9



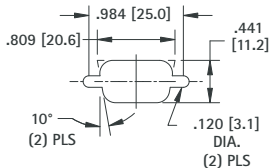
TYPE 15



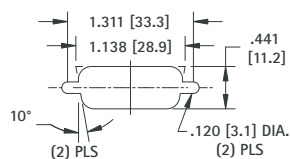
TYPE 25



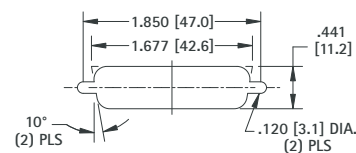
TYPE 9A



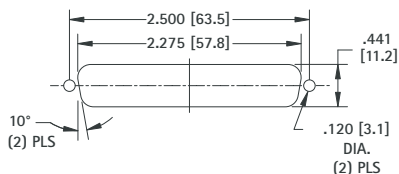
TYPE 15A



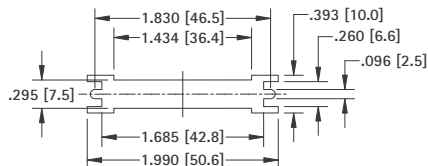
TYPE 25A



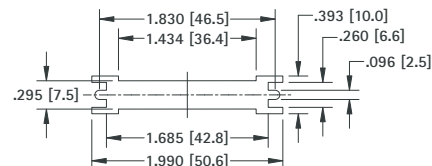
TYPE 37



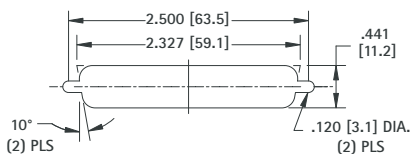
SCSI 1 - 50 PIN



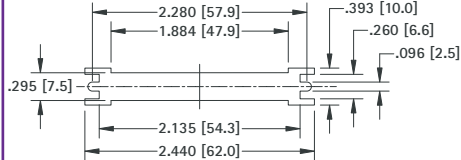
SCSI 2.3 OR 4 - 50 PIN



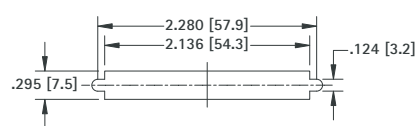
TYPE 37A



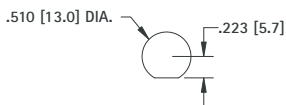
SCSI 1 - 68 PIN



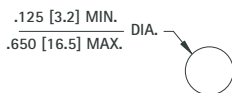
SCSI 2.3 OR 4 - 68 PIN



BNC



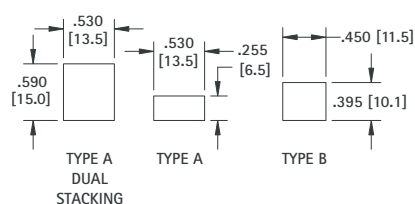
ROUND



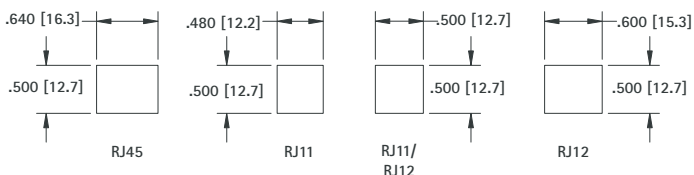
RECOMMENDED DIAMETERS

- PS/2 = .650 (16.5)
- Mini-Din = .400 (10.2) to .650 (16.5)
- Stereo Jacks = .280 (7.1)
- Phono Jacks = .400 (10.2)

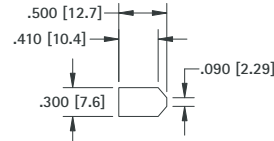
USB



RJ11 - RJ45



IEEE 1394 - "FIREWIRE"

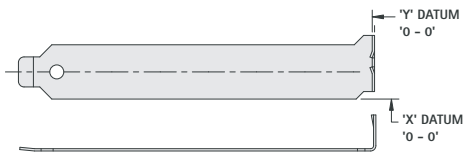


STAMPED IDENTIFICATION MARKINGS

- AUDIO IN
- AUDIO OUT
- LINE IN
- LINE OUT
- VGA IN
- VGA OUT
- SVIDEO IN
- SVIDEO OUT
- VIDEO IN
- VIDEO OUT
- CAMERA IN
- TUNER OUT
- INPUT
- OUTPUT
- MIC
- S/P DIF
- PHONE
- LINE
- HANDSET
- ISDN

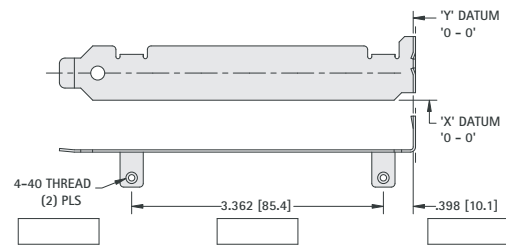


EISI/ISA or PCI



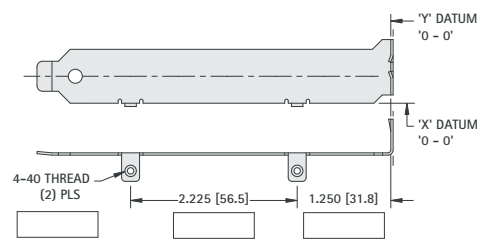
- CAT. NO. 9200
- CAT. NO. 9201 (Ribbed)
- CAT. NO. 9230

PCI with TABS



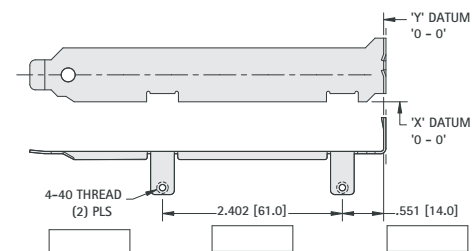
- CAT. NO. 9203

EISA/ISA with TABS



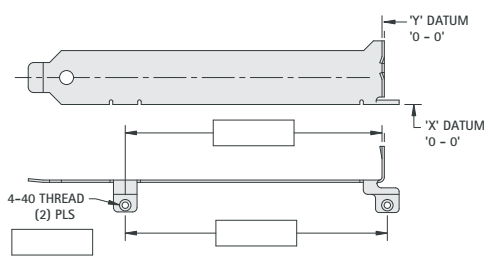
- CAT. NO. 9202

EISA/ISA with TABS



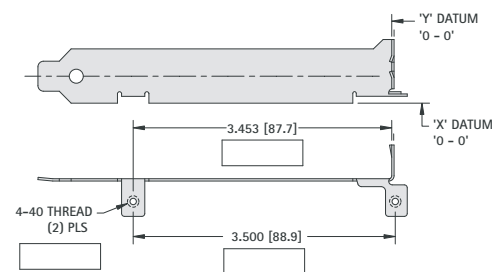
- CAT. NO. 9206

EISA/ISA with TABS



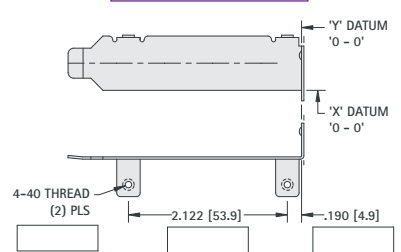
- CAT. NO. 9205
- CAT. NO. 9207

EISA/ISA with TABS



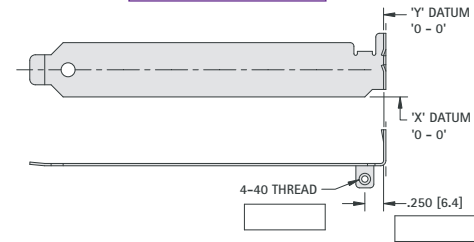
- CAT. NO. 9208

LOW PROFILE with TABS



- CAT. NO. 9231

PCI with TAB



- CAT. NO. 9204

If you do not have your own drawing, please use the worksheet provided.

- STEP 1:** Select a standard blank configuration PCI or EISA/ISA, with or without tabs.
- STEP 2:** If you've selected a standard blank with tabs and the tab locations do not meet your requirements, indicate the dimensions in the boxes.
- STEP 3:** Select your standard panel cutouts (page 110) and place them on your selected drawing.
- STEP 4:** Use Datum's X and Y on drawing, to indicate the precise location of the center lines of the cutout(s).
- STEP 5:** For stamped identification markings (page 110) indicate the approximate location(s).
- STEP 6:** Quantities Required: _____
If you have any questions, please contact our application engineers.

Name: _____ Title: _____

Company: _____

Address: _____

Phone: _____ Fax: _____

For prompt quotations fax, mail or e-mail this worksheet.