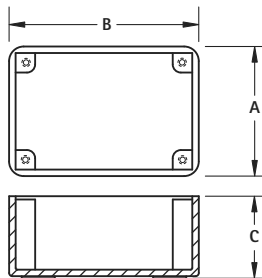


PHENOLIC INSTRUMENT CASES



MATERIALS:

Phenolic Panels: .062 (1.57) Glossy Black Phenolic, MIL-P3115C
Aluminum Panels: .062 (1.57), 5052-H34 per QQ 318 C; Bright finished surface with pressure sensitive protective covering tape

MATERIALS:

Phenolic Cases: .125 (3.2) Wall thickness, Molded Glossy Black Phenolic, MIL-M-14, CFG

- Cases and panels are sold separately
- Covers available in Phenolic or Aluminum
- Covers can be machined to accept dials, switches, displays
- Panel mounting screws available - Refer to page 131
- Sturdy case can be machined for wiring access
- Ideal for prototype or lab use

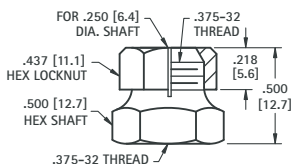
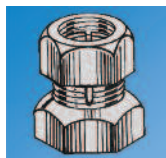
COVER PANEL	
PHENOLIC PANEL	ALUMINUM PANEL
CAT. NO.	CAT. NO.
2050	2051
2042	2044
2043	2045
2037*	2046
2052*	2053
2038*	2047
2039*	2048

PHENOLIC CASE				
CAT. NO.	A	B	C	THREAD SIZE AND TYPE
715	2.500 (63.5)	3.500 (88.9)	1.250 (31.8)	4-40 TAPPED
703	2.875 (73.0)	4.000 (101.6)	1.562 (39.7)	4-40 TAPPED
705	2.875 (73.0)	4.000 (101.6)	1.562 (39.7)	USE #4 SELF TAPPING SCREW
704	3.125 (79.4)	5.875 (149.2)	2.250 (57.2)	4-40 TAPPED
700	3.750 (95.3)	6.250 (158.8)	2.000 (50.8)	6-32 BRASS INSERT
716	4.250 (108.0)	5.000 (127.0)	1.750 (44.5)	6-32 BRASS INSERT
701	5.250 (133.4)	6.812 (173.0)	2.312 (58.7)	6-32 BRASS INSERT
702	7.375 (187.3)	8.375 (212.7)	3.000 (76.2)	6-32 BRASS INSERT

*.093 (2.36)

SHAFT LOCKS

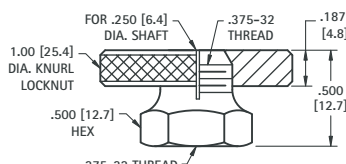
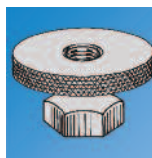
For .250 (6.4) SHAFT



MATERIAL: Brass, Nickel Plate

CAT. NO. 1701

For .250 (6.4) SHAFT



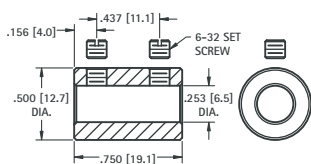
MATERIAL: Brass, Nickel Plate

CAT. NO. 1702

.250 (6.4) SHAFT COUPLING



Two set screws hold shaft securely

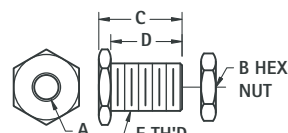


MATERIAL: Brass, Nickel Plate
 Set Screws: Steel, Zinc Plate
 Supplied unassembled

CAT. NO. 1453

PANEL BEARINGS

STANDARD and MINIATURE



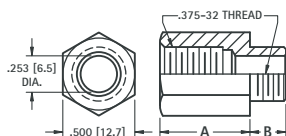
MATERIAL: Brass, Nickel Plate
 Supplied unassembled

CAT. NO.	A	B (HEX)	C	D	E THREAD
1705	.253 (6.4)	.437 (11.1)	.500 (12.7)	.437 (11.1)	.375-32 Standard
1706	.128 (3.3)	.343 (8.7)	.437 (11.1)	.375 (9.5)	.250-32 Miniature

VOLUME CONTROL EXTENDERS



For .250 (6.4) volume control shafts having .375-32 threaded bushings.



CAT. NO.	A	B
1464	.625 (15.9)	.250 (6.4)
1465	.625 (15.9)	.375 (9.5)
1466	.687 (17.4)	.500 (12.7)
1467	.750 (19.1)	.250 (6.4)

MATERIAL: Brass, Nickel Plate

PANEL NUTS



For Volume Controls, Switches, Tip Jacks, etc.

CAT. NO.	FOR	THREAD	DIAMETER	THICKNESS
1448	Mounting	1/4-32	.375 Hex	.093 (2.36)
1449	Mini. Control	1/4-32	.312 Hex	.078 (1.98)
1456	Vol. Control	3/8-32	.500 Hex	.093 (2.36)
1458	Switch	15/32-32	.562 Hex	.078 (1.98)
1459	Switch Ring	15/32-32	.625 Knurled	.062 (1.57)
1472	Filter	5/16-32	.375 Hex	.093 (2.36)

MATERIAL: Brass, Nickel Plate