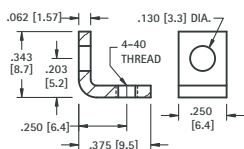


THREADED MOUNTING BRACKETS

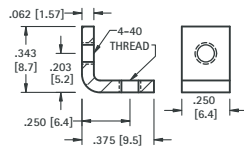
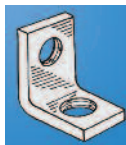
4-40 THREAD



CAT. NO. 612

MATERIAL:
.062 (1.57) Steel, Zinc Plate

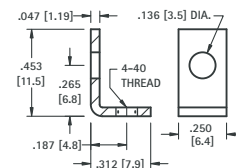
4-40 THREAD



CAT. NO. 621

MATERIAL:
.062 (1.57) Steel, Zinc Plate

4-40 THREAD

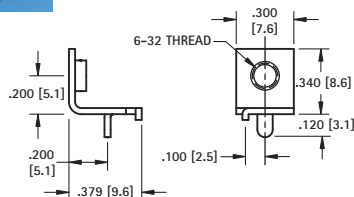


CAT. NO. 616

MATERIAL:
.047 (1.19) Brass, Tin Plate

6-32 THREAD

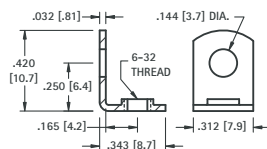
THRU-HOLE MOUNT



CAT. NO. 632

MATERIAL:
.032 (.81) Brass, Tin Plate

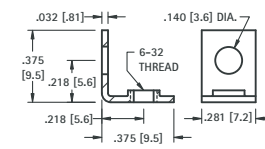
6-32 THREAD



CAT. NO. 614

MATERIAL:
.032 (.81) Brass, Tin Plate

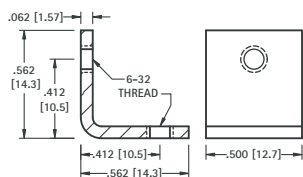
6-32 THREAD



CAT. NO. 634

MATERIAL:
.032 (.81) Brass, Nickel Plate

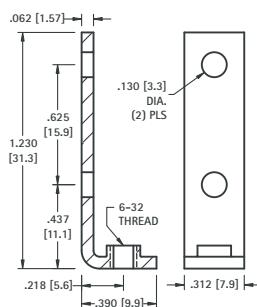
6-32 THREAD



CAT. NO. 4334

MATERIAL:
.062 (1.57) Steel, Nickel Plate

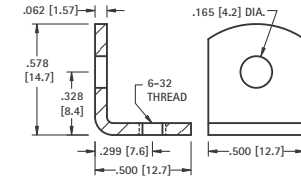
6-32 THREAD



CAT. NO. 708

MATERIAL:
.062 (1.57) Steel, Nickel Plate

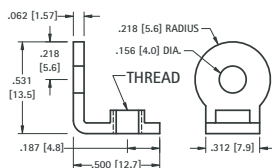
6-32 THREAD



CAT. NO. 617

MATERIAL:
.062 (1.57) Steel, Tin Plate

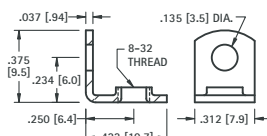
6-32 OR 8-32 THREAD



CAT. NO.	THREAD
4332	6-32
4333	8-32

MATERIAL:
.062 (1.57) Brass, Nickel Plate

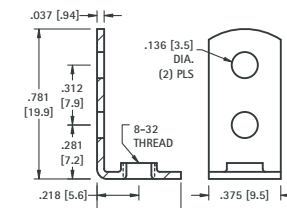
8-32 THREAD



CAT. NO. 611

MATERIAL:
.037 (.94) Brass, Tin Plate

8-32 THREAD

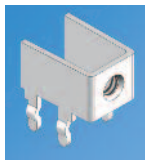


CAT. NO. 631

MATERIAL:
.037 (.94) Steel, Tin Plate

SNAP-IN THREADED PC MOUNT BRACKETS

- Snaps in for wave soldering • Reduces assembly time • Easily mount into predrilled or punched holes • Stable no rock design

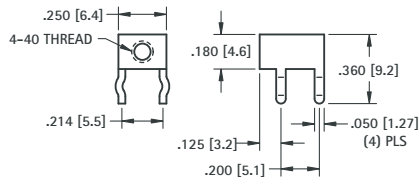


**SNAP-IN
PC MOUNT**

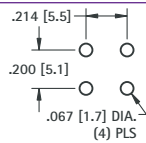


For screw selection
refer to page 143

4-40 THREAD



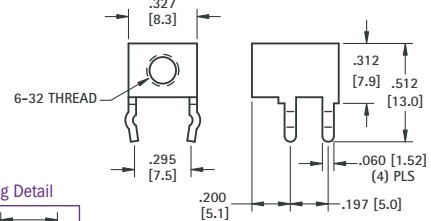
Mounting Detail



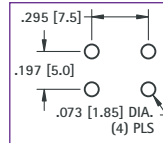
MATERIAL: .032 (.81) Brass, Matte Tin Plate

CAT. NO. 7774

6-32 THREAD



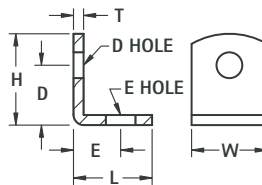
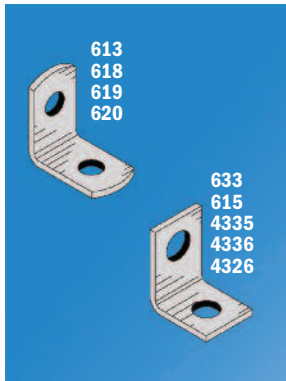
Mounting Detail



MATERIAL: .032 (.81) Brass, Matte Tin Plate

CAT. NO. 7779

UNIVERSAL CLEAR HOLE BRACKETS



CAT. NO.	H	L	W	D	D HOLE DIAMETER	E	E HOLE DIAMETER	T	MATERIAL	FINISH
633	.375 (9.5)	.375 (9.5)	.281 (7.1)	.218 (5.5)	.144 (3.7)	.218 (5.5)	.144 (3.7)	.032 (.81)	Brass	Nickel
613	.390 (9.9)	.453 (11.5)	.375 (9.5)	.234 (5.9)	.147 (3.7)	.299 (7.6)	.128 (3.3)	.032 (.81)	Brass	Nickel
615	.420 (10.7)	.343 (8.7)	.281 (7.1)	.281 (7.1)	.144 (3.7)	.203 (5.2)	.128 (3.3)	.032 (.81)	Brass	Tin
4335	.562 (14.3)	.562 (14.3)	.500 (12.7)	.412 (10.5)	.120 (3.0)	.411 (10.4)	.120 (3.0)	.062 (1.57)	Steel	Nickel
4336	.562 (14.3)	.562 (14.3)	.500 (12.7)	.412 (10.5)	.144 (3.7)	.412 (10.5)	.144 (3.7)	.062 (1.57)	Steel	Nickel
618	.628 (16.0)	.628 (16.0)	.375 (9.5)	.378 (9.6)	.169 (4.3)	.378 (9.6)	.169 (4.3)	.050 (1.27)	Brass	Tin
619	.687 (17.4)	.687 (17.4)	.375 (9.5)	.500 (12.7)	.144 (3.7)	.500 (12.7)	.144 (3.7)	.032 (.81)	Steel	Tin
4326	1.013 (25.7)	.487 (12.4)	.312 (7.9)	.816 (20.7)	.140 (3.6)	.332 (8.4)	.140 (3.6)	.050 (1.27)	Steel	Nickel
620	1.156 (29.4)	.656 (16.7)	.375 (9.5)	.906 (23.0)	.169 (4.3)	.420 (10.7)	.169 (4.3)	.032 (.81)	Steel	Tin

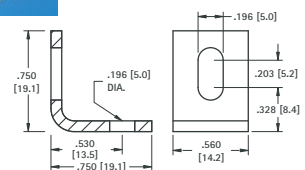
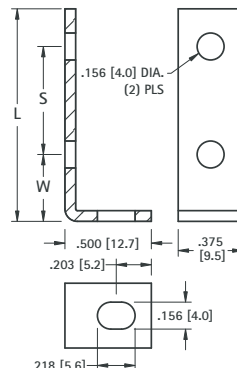
BOARD BRACKETS



Originally designed for our line of standardized terminal boards; these brackets can also be used in other applications.

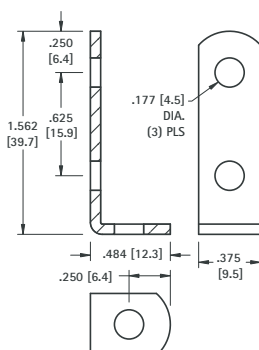
MATERIALS: .062 (1.57) Steel, Nickel Plate

CAT. NO.	W	L	S
1570	.281 (7.1)	1.187 (30.1)	.750 (19.1)
1556	.375 (9.5)	1.625 (41.3)	1.000 (25.4)
1571	.281 (7.1)	1.625 (41.3)	1.187 (30.1)
1567	.375 (9.5)	2.125 (54.0)	1.500 (38.1)
1568	.375 (9.5)	2.625 (66.7)	2.000 (50.8)
1569	.375 (9.5)	3.125 (79.4)	2.500 (63.5)



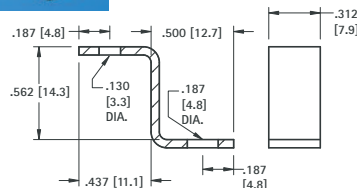
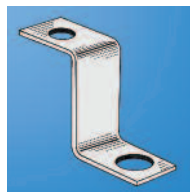
CAT. NO. 4337

MATERIAL: .080 (2.03) Aluminum



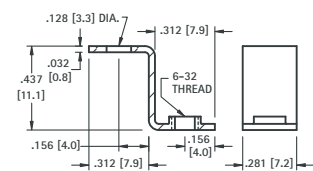
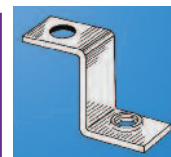
CAT. NO. 1564

MATERIAL: .062 (1.57) Steel, Nickel Plate



CAT. NO. 4325

MATERIAL: .050 (1.27) Steel, Nickel Plate



CAT. NO. 630

MATERIAL: .032 (.81) Brass, Tin Plate