

THRU-HOLE (THM) & SURFACE MOUNT (SMT) COIN CELL HOLDERS

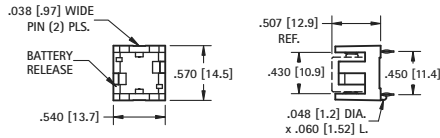
12mm to 16mm COIN CELL HOLDERS

DESIGN ADVANTAGES...

- Reliable spring tension assures low contact resistance
- Retains battery securely to withstand shock and vibration
- Base material UL Rated 94V-0. Impervious to most industrial solvents
- Operating temperature range: -60°F to +293°F (-51°C to +145°C)

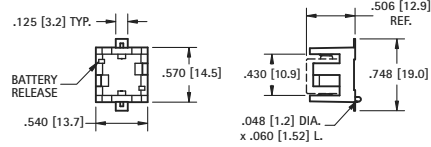
IDEALLY SUITED FOR...

- Computer memory, power transfer and back-up systems
- Video and telecommunications power back-up
- Microprocessors and Microcomputer memory hold (desktop and laptop applications)
- Industrial and commercial security and alarm systems
- PC 104 application



1/3N

AVAILABLE ON TAPE AND REEL

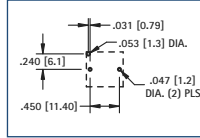


MATERIAL:

Base: High Temperature Nylon 46, UL Rated 94V-0
Contacts: .012 (.30) Phosphor Bronze, Gold Plate (Flash)

CAT. NO.	CELLS	BATTERY REFERENCE
503	1	DL1/3N, K58L, CR1/3N
	2	SR44, 357, MS76, G-13, 303, V313, PX76A

Mounting Detail

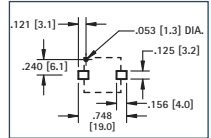


MATERIAL:

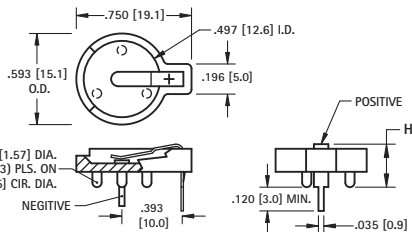
Base: High Temperature Nylon 46, UL Rated 94V-0
Contacts: .012 (.30) Phosphor Bronze, Gold Plate (Flash)

CAT. NO. BULK	ON TAPE & REEL	CELLS	BATTERY REFERENCE
498	498TR	1	DL1/3N, K58L, CR1/3N
		2	SR44, 357, MS76, G-13, 303, V313, PX76A

Pad Layout

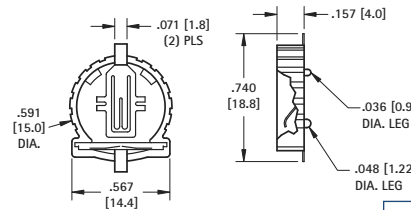


Tape & Reel Spec's: 44mm wide; 20mm pitch; 13 inch reel (200 pieces per reel)



12mm

AVAILABLE ON TAPE AND REEL

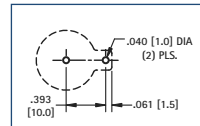


MATERIAL:

Base: PBT, UL Rated 94V-0
Positive Contact: .015 (.38) Spring Steel, Tin-Nickel Plate
Negative Contact: .035 (.89) Dia. Steel, Tin-Nickel Plate

CAT. NO.	HEIGHT (H)	CELLS	BATTERY REFERENCE
500	.280 (7.1)	1	BR1212, CR1216, CL1220, CR1225
501	.380 (9.7)	2	BR1212, CR1216, CL1220, CR1225

Mounting Detail

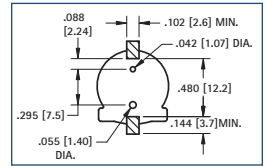


MATERIAL:

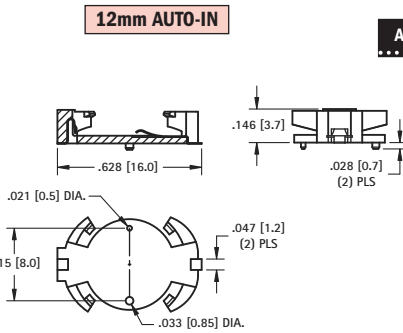
Base: Glass Filled PPS, UL Rated 94V-0
Contacts: .008 (.20) Phosphor Bronze, Gold Plate (Flash)

CAT. NO. BULK	ON TAPE & REEL	CELLS	BATTERY REFERENCE
1056	1056TR	1	CR1220, BR1220, CL1220

Pad Layout



Tape & Reel Spec's: 32mm wide; 20mm pitch; 13 inch reel (500 per reel)



12mm AUTO-IN

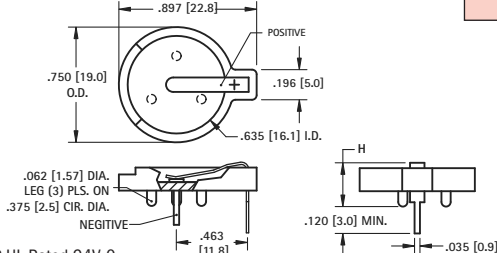
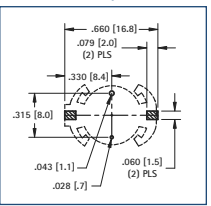
AVAILABLE ON TAPE AND REEL

MATERIAL:

Base: PA9T, Black
Contacts: .004 (.10) Phosphor Bronze
Contact Area: Gold Plate (Flash)
Solder Tails: Matte Tin Plate

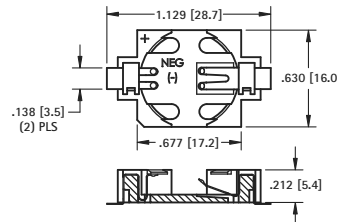
CAT. NO. BULK	ON TAPE & REEL	CELLS	BATTERY REFERENCE
1072	1072TR	1	CR1220, BR1220, CL1225

Tape & Reel Spec's: 44mm wide; 24mm pitch; 13 inch reel (450 per reel)



16mm

AVAILABLE ON TAPE AND REEL

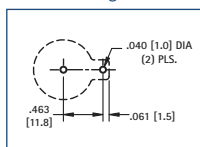


MATERIAL:

Base: Glass Filled LCP, UL Rated 94V-0
Positive Contact: .015 (.38) Spring Steel, Tin-Nickel Plate
Negative Contact: .035 (.89) Dia. Steel, Tin-Nickel Plate

CAT. NO.	HEIGHT (H)	CELLS	BATTERY REFERENCE
502	.285 (7.3)	1	CR1612, CL1616, CL1620
		2	CR1612
502-3	.330 (8.4)	1	BR1625, CR1632
		2	BR1616, CR1620, CL1620

Mounting Detail

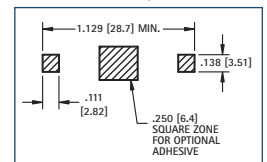


MATERIAL:

Base: Glass Filled LCP, UL Rated 94V-0
Contacts: .006 (.15) Phosphor Bronze, Gold Plate (Flash)

CAT. NO. BULK	ON TAPE & REEL	CELLS	BATTERY REFERENCE
504	504TR	1	BR1625, CR1632

Pad Layout

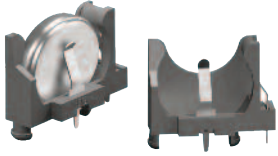


Tape & Reel Spec's: 44mm wide; 24mm pitch; 13 inch reel (450 per reel)

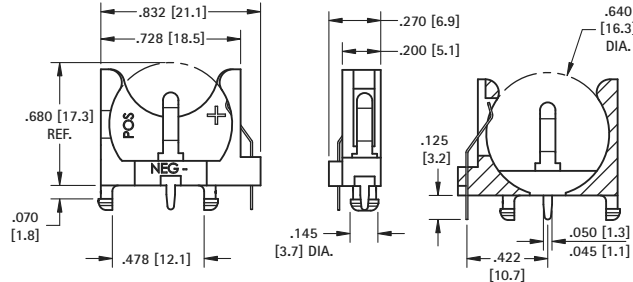
THRU-HOLE MOUNT (THM) VERTICAL VIBRA-FIT CELL HOLDERS

- Accepts all manufactures of 20mm coin cell batteries
- Retains cells securely, withstands shock and vibration
- Polarity clearly marked
- Mounts securely for wave soldering
- Operating Temperature Range: -60°F to 293°F (-51°C to 145°C)

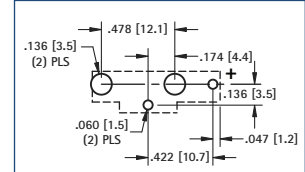
16mm VERTICAL



- Stabilizing pins assure vertical positioning & reduce solder joint stress.
- Polarized holder protects circuit from improper use.



Pad Layout



MATERIAL:

Base: PBT, UL Rated 94V-0

Contacts: .010 (.25) Steel, Tin-Nickel Plate

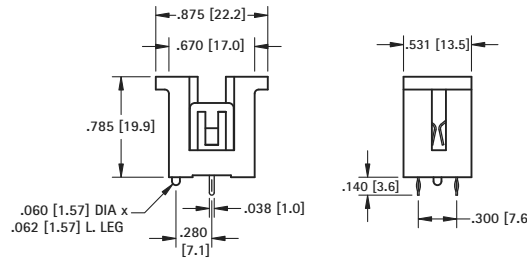
Battery Reference: (1) cell: BR1612, CR1616, CL1620, CR1625, BR1632

CAT. NO. 1069

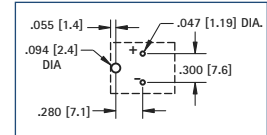
20mm COMPACT



- Molded notch prevents improper insertion of 2032 size cells



Mounting Detail



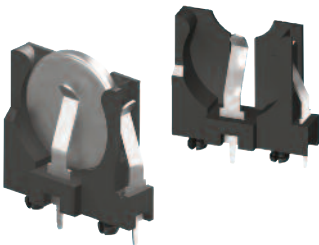
MATERIAL:

Contacts: .012 (.30) Spring Steel, Tin-Nickel Plate

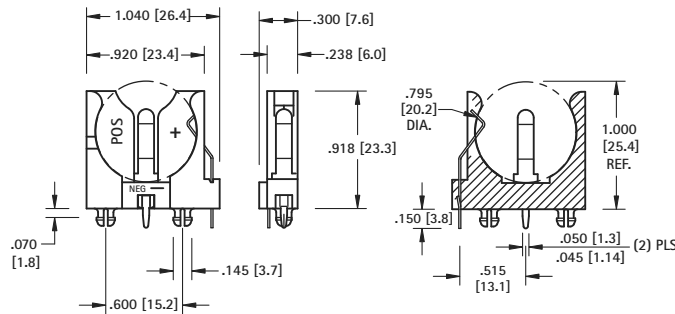
Base: PBT, UL Rated 94V-0

CAT. NO.	BATTERY REFERENCE
1067	CR2016, DL2020, CL2025, CR2032

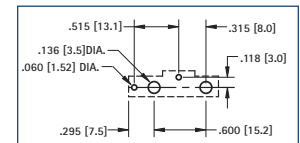
20mm SLIM-LINE



- Polarized holder, protects circuit from improper insertion of cells.



Mounting Detail



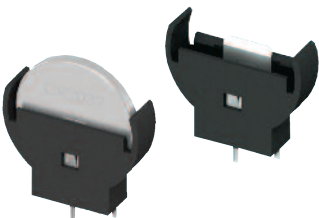
MATERIAL:

Contacts: .016 (.41) Spring Steel, Tin-Nickel Plate

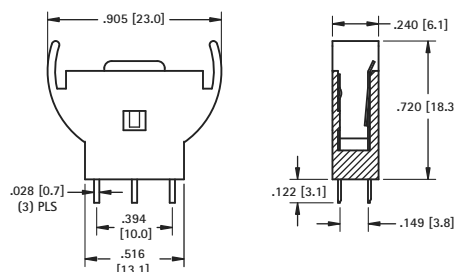
Base: PBT, UL Rated 94V-0

CAT. NO.	BATTERY REFERENCE
1065	BR2012, CR2016, DL2020, CL2025, CR2032

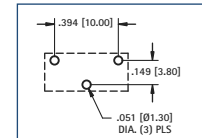
20mm SLIM-LINE



- Top loading.



Mounting Detail



MATERIAL:

Contacts: .010 (.25) Brass, Tin Plate

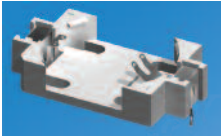
Base: Nylon 6/6, Black

CAT. NO.	BATTERY REFERENCE
1074	CR2032

THRU-HOLE (THM) & SURFACE MOUNT (SMT) VIBRA-FIT HOLDERS

- Extremely rugged, holds battery securely under shock and vibration applications
- Polarized holder protects circuit from improper battery insertion
- Polarity clearly marked
- Safe for all soldering and reflow operations
- Designed for manual insertion of battery
- Glass Filled LCP base material UL Rated 94V-0 impervious to most industrial solvents
- Operating Temperature Range: -60°F to 293°F (-51°C to 145°C)

2025 / 2032 THRU HOLE MOUNT HOLDER



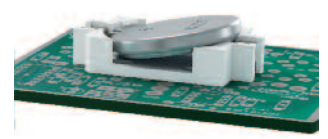
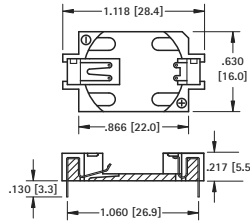
Thru Hole Mount

MATERIAL:

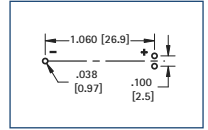
Contacts: .006 (.15) Phosphor Bronze, Tin Plate
Base: Glass Filled LCP, UL Rated 94V-0

CAT. NO.	BATTERY REFERENCE
1059	CR2025, DL2032

- Tin plated contacts compatible with wave solder and manual soldering process



Mounting Detail



2025 / 2032 SURFACE MOUNT HOLDER



Surface Mount

MATERIAL:

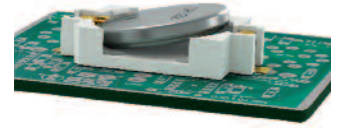
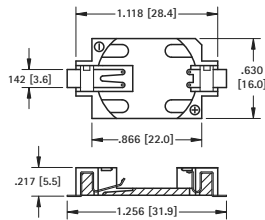
Contacts: .006 (.15) Phosphor Bronze, Gold Plate (Flash)
Base: Glass Filled LCP, UL Rated 94V-0

CAT. NO. BULK	ON TAPE & REEL	BATTERY REFERENCE
1060	1060TR	CR2025, DL2032

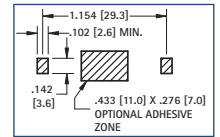
Tape & Reel Spec's: 44mm wide; 20mm pitch; 13 inch reel (500 pieces per reel)

AVAILABLE ON TAPE AND REEL

- Compatible with vacuum and mechanical pick & place assembly systems
- All conductive polystyrene carrier tape meets ANSI/EIA-481 standards
- Viewable solder tails allows for easy solder joint inspection



Pad Layout



SURFACE MOUNT (SMT) AUTO-IN HOLDERS

- Designed for applications where the battery will be automatically inserted via a vacuum or mechanical pick-and-place device
- All conductive polystyrene carrier tape meets ANSI/EIA-481 standards
- Viewable solder tails allows for easy solder joint inspection
- Gold plated contacts assure low contact resistance
- Ideal for retaining cells securely under shock and vibration
- Compatible with most vacuum and mechanical pick-and-place assembly systems

2032 LOW PROFILE HOLDER



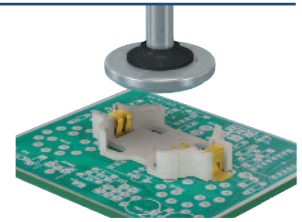
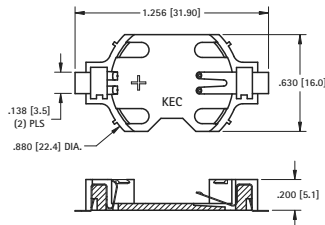
Surface Mount

MATERIAL:

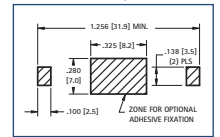
Contacts: .006 (.15) Phosphor Bronze, Gold Plate (Flash)
Base: Glass Filled LCP, UL Rated 94V-0

CAT. NO. BULK	ON TAPE & REEL	BATTERY REFERENCE
1058	1058TR	CR2032

AVAILABLE ON TAPE AND REEL



Pad Layout



2032 ULTRA LOW PROFILE HOLDER



MATERIAL:

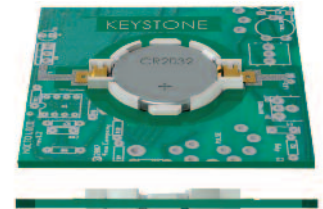
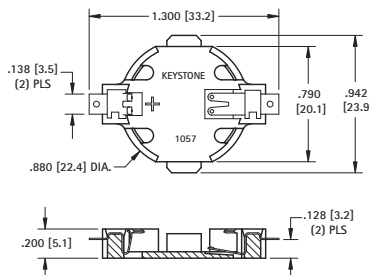
Contacts: .009 (.23) Phosphor Bronze, Gold Plate (Flash)
Base: Glass filled LCP, UL Rated 94V-0

CAT. NO. BULK	ON TAPE & REEL	BATTERY REFERENCE
1057	1057TR	CR2032

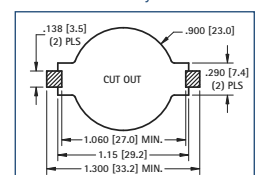
Tape & Reel Spec's: 56mm wide; 32mm pitch; 13 inch reel (400 pieces per reel)

AVAILABLE ON TAPE AND REEL

- Ideal when circuit board height is a critical design parameter
- Rises only 2mm above the PCB surface by mounting the holder thru a hole in the PCB, allowing the holder to sit through the PCB
- Built-in stabilization tabs add mounting security



Pad Layout



THRU-HOLE (THM) & SURFACE MOUNT (SMT) COIN CELL HOLDERS

DESIGN ADVANTAGES...

- Reliable spring tension assures low contact resistance
- Retains battery securely to withstand shock and vibration
- All conductive polystyrene carrier tape meets ANSI/EIA - 481 standard

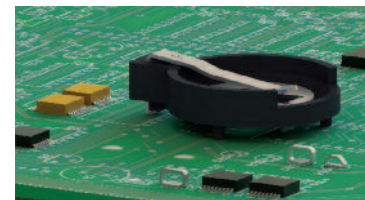
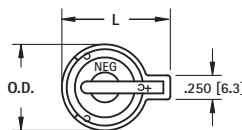
- Base material UL Rated 94V-0. Impervious to most industrial solvents
- Operating temperature range: -60°F to +293°F (-51°C to +145°C)

IDEALLY SUITED FOR...

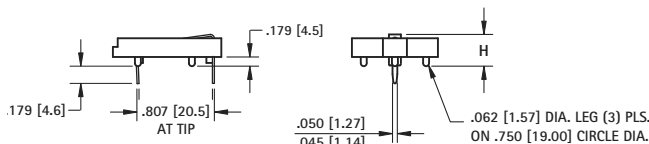
- Computer memory, power transfer and back-up systems
- Video and telecommunications power back-up
- Microprocessors and Microcomputer memory hold (desktop and laptop applications)

- Industrial and commercial security and alarm systems
- Communications power sources
- PC 104 applications

20mm THRU-HOLE MOUNT CON CELL HOLDER



- Advanced air-flow design enhances air circulation around battery
- Reliable spring tension assures low contact resistance
- Unique notched slots assure quick and easy battery insertion and replacement
- Retains battery securely to withstand shock and vibration



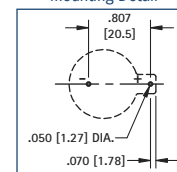
MATERIAL:

Contacts: .020 (.50) Spring Steel, Tin-Nickel Plate

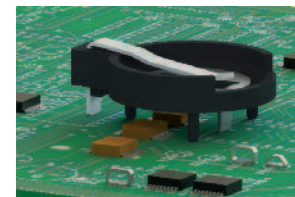
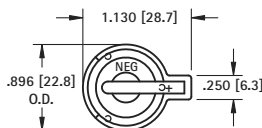
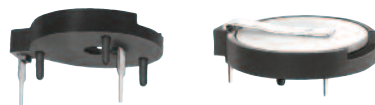
Base: PBT, UL Rated 94V-0

CAT. NO.	H	L	O.D.	NO. OF CELLS	BATTERY REFERENCE
103	.335 (8.5)	1.130 (28.7)	.896 (22.8)	(1) cell (any 20mm) (2) 2012, (2) 2016	BR2012, CR2012, CR2016, CL2016, DL2020, CL2025, BR2025, CR2032, CL2032
106	.335 (8.5)	1.219 (31.0)	1.093 (27.8)	(1) cell (any 20mm) (2) 2012, (2) 2016	BR2012, CR2012, CR2016, CL2016, DL2020, CL2025, BR2025, CR2032, CL2032
1026	.452 (11.5)	1.219 (31.0)	1.093 (27.8)	(2) 2020, (2) 2025, (2) 2032	DL2020, CR2020, CL2025, BR2025, CR2032, CL2032

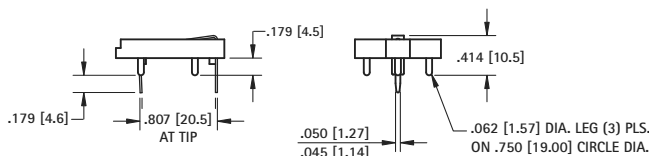
Mounting Detail



20mm RAISED MOUNT COIN CELL HOLDER



- Designed to maximize PC Board Capacity
- Unique raised mounting design allows components to be placed underneath the holder
- Ideal when board space is more important than board height; such as PC 104 applications



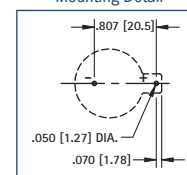
MATERIAL:

Contacts: .020 (.50) Spring Steel, Tin-Nickel Plate

Base: PBT, UL Rated 94V-0

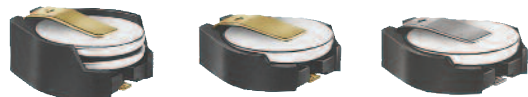
CAT. NO.	BATTERY REFERENCE	NO. OF CELLS
101	BR2012, CR2016, CL2020, CR2025, CR2032	(1) cell (any 20mm) (2) 2012, (2) 2016

Mounting Detail

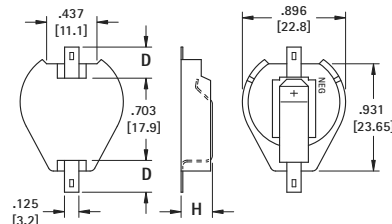


20mm SURFACE MOUNT COIN CELL HOLDER

AVAILABLE ON TAPE AND REEL



- Polarity clearly marked (+)
- Compatible with vacuum and mechanical pick & place assembly systems
- SMT solder tail with "Flow-Hole" design for increased joint strength
- Viewable solder tails assures reliable joint inspection
- Safe for all soldering & reflow operations



MATERIAL:

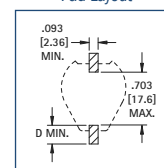
Contacts: .015 (.38) Steel

Base: High Temperature, Nylon 46, UL Rated 94V-0

Tin-Nickel Plate		Gold Plate (Flash)		D PAD SIZE	H HEIGHT	NO. OF CELLS	BATTERY REFERENCE
CAT. NO. BULK	ON TAPE & REEL	CAT. NO. BULK	ON TAPE & REEL				
1061	1061TR	1081	1081TR	.156 (4.0)	290 (7.4)	(1) Cell (any 20mm) (2) 2012, (2) 2016	CR2012, CL2016, BR2020, DL2032 CR2032
1063	1063TR	1093	1093TR	.278 (7.1)			
1062	1062TR	1082	1082TR	.156 (4.0)	.406 (10.3)	(2) 2020, (2) 2025, (2) 2032	
1064	1064TR	1094	1094TR	.278 (7.1)		(3) 2012, (3) 2016	

Tape & Reel Spec's: 44mm wide; 32mm pitch; 13 inch reel (200 pieces per reel)

Pad Layout



THRU HOLE (THM) & SURFACE MOUNT (SMT) 20mm EZ-OUT HOLDERS

- Top loading for compact applications
- Finger pressure against lever will release battery
- No tools required
- Holds battery securely under shock and vibration applications
- Nylon base material UL Rated 94V-0, impervious to most industrial solvents
- Operating Temperature Range: -60°F to 293°F (-51°C to 145°C)

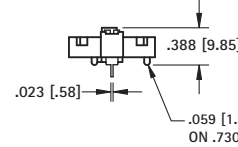
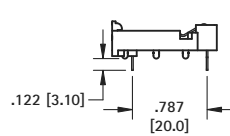
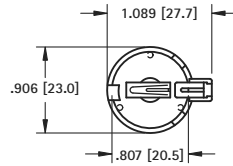
THM EZ-OUT COIN CELL HOLDER



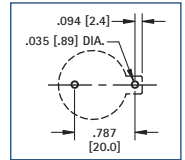
- Designed for manual insertion of battery.
- Mounts securely for wave soldering

MATERIAL:
Contacts: .016 (.41) Phosphor Bronze, Tin Plate
Base: Nylon UL Rated 94V-0

CAT. NO.	BATTERY REFERENCE
1066	BR2025, CR2032



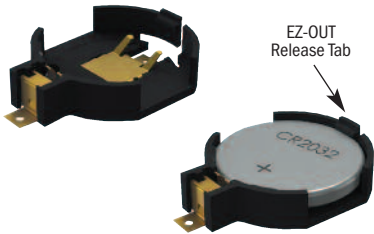
Mounting Detail



SMT AUTO-IN/EZ-OUT COIN CELL HOLDER

AVAILABLE ON TAPE AND REEL

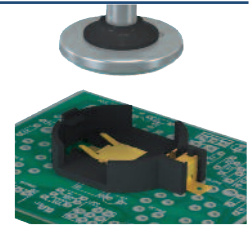
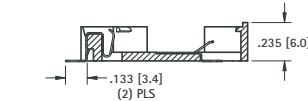
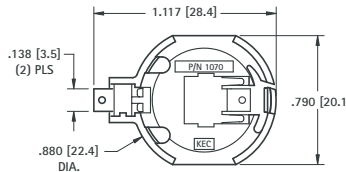
- Designed for automatic vertical insertion of battery via a vacuum or mechanical pick-and-place device
- Compatible with vacuum and mechanical pick & place assembly systems
- All conductive polystyrene carrier tape meets ANSI/EIA-481 standards



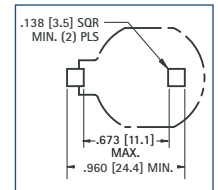
MATERIAL:
Contacts: .009 (.23) Phosphor Bronze, Gold Plate (Flash)
Base: High temperature Nylon 4/6, UL Rated 94V-0

CAT. NO.	ON TAPE & REEL	BATTERY REFERENCE
1070	1070TR	CR2032

Tape & Reel Spec's: 44mm Wide, 24mm Pitch, 13 inch reel (400 pieces per reel)



Pad Layout



THRU HOLE (THM) & SURFACE MOUNT (SMT) 23mm COIN CELL HOLDERS

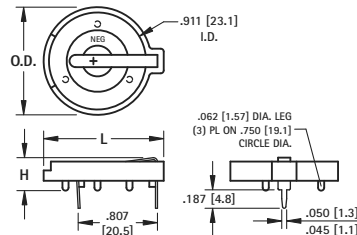


Thru Hole Mount

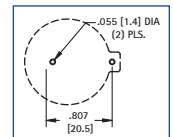
- Advanced air-flow design enhances air circulation around battery
- Unique notched slots assure quick and easy battery insertion and replacement

MATERIAL:
Contacts: .020 (.50) Spring Steel, Tin-Nickel Plate
Base: PBT, UL Rated 94V-0
Operating Temperature: -60°F to +293°F (-51°C to +145°C)

CAT. NO.	H	L	O.D.	NO. OF CELLS	BATTERY REFERENCE
104	.335 (8.5)	1.150 (29.2)	1.000 (25.4)	(1) Cell (Any 23mm)	BR2320, CR2320, CL2325, DL2330, CL2354, CR2335
107	.335 (8.5)	1.219 (31.0)	1.093 (27.8)	(1) Cell (Any 23mm)	
1027	.452 (11.5)	1.219 (31.0)	1.093 (27.8)	(1) 2354 (2) 2320, (2) 2325, (2) 2330	



Mounting Detail



AVAILABLE ON TAPE AND REEL

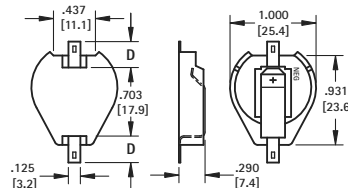
- SMT solder tail with "Flow-Hole" design for increased joint strength
- Viewable solder tails assures reliable joint inspection
- All conductive polystyrene carrier tape meets ANSI/EIA - 481 standard



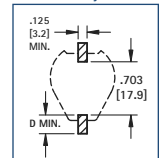
Surface Mount

MATERIAL:
Contacts: .015 (.38) Steel
Base: High Temp Nylon 46, UL Rated 94V-0
Operating Temperature: -60°F to +293°F (-51°C to +145°C)

Tin-Nickel Plate	Gold Plate (Flash)	D	BATTERY REFERENCE
CAT. NO. ON TAPE & REEL	CAT. NO. ON TAPE & REEL	PAD SIZE	REFERENCE
1071	1071TR	.156 (4.0)	CR2320, CL2325, DL2330, CR2335
1073	1073TR	.278 (7.1)	DL2330, CR2335



Pad Layout



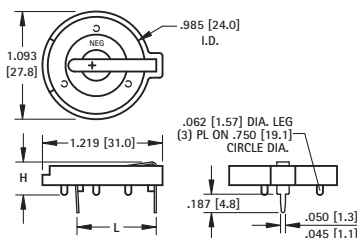
THRU-HOLE (THM) & SURFACE MOUNT (SMT) COIN CELL HOLDERS

24mm

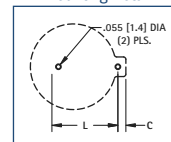


Thru Hole Mount

- Advanced air-flow design enhances air circulation around battery
- Unique notched slots assure quick and easy battery insertion and replacement



Mounting Detail



MATERIAL:

Base: PBT, UL Rated 94V-0

Contacts: .020 (.50) Spring Steel, Tin-Nickel Plate

Operating Temperature: -60°F to +293°F (-51°C to +145°C)

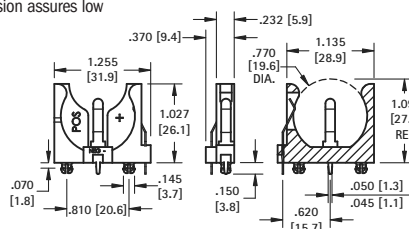
CAT. NO.	C	H	L	NO. OF CELLS	BATTERY REFERENCE
105	.074 (1.9)	.335 (8.5)	.805 (20.5)	(1) 2430	CR2430, CL2430, BR2450, CR2477
1025	.074 (1.9)	.452 (11.5)	.805 (20.5)	(2) 2430	
1025-7	.074 (1.9)	.503 (12.8)	.805 (20.5)	(1) 2477	
				(2) 2430	

24mm VERTICAL

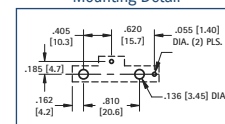


Thru Hole Mount

- Polarized holder
- Mounts securely for wave soldering
- Reliable spring tension assures low contact resistance



Mounting Detail



MATERIAL:

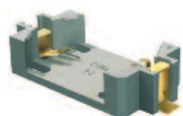
Base: PBT, UL Rated 94V-0

Contacts: .020 (.50) Spring Steel, Tin-Nickel Plate

Operating Temperature: -60°F to +293°F (-51°C to +145°C)

CAT. NO.	BATTERY REFERENCE
1068	(1) CR2450, (1) CL2450

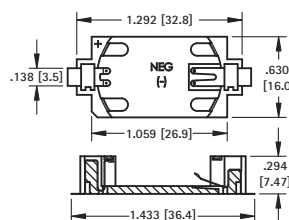
24mm TOP Loading



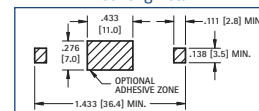
Surface Mount

AVAILABLE ON TAPE AND REEL

- Polarized holder
- Low profile for densely packed PCB's
- Compatible with vacuum and mechanical pick & place systems
- Conductive carrier tape meets ANSA/EIA- 481 standard



Mounting Detail



MATERIAL:

Base: LCP, UL Rated 94V-0

Contacts: .006 (.15) Phosphor Bronze, Gold Plate (Flash)

Operating Temperature: -60°F to +293°F (-51°C to +145°C)

CAT. NO.	ON TAPE & REEL	BATTERY REFERENCE
1052	1052TR	(1) CR2450

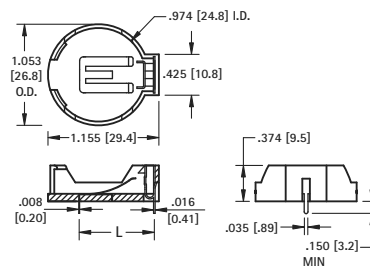
Tape & Reel Spec's: 56mm wide; 20mm pitch; 13 inch reel, (400 pieces per reel)

24mm AUTO-IN/EZ-OUT

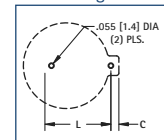


Thru Hole Mount

- Battery "Pop-in" from Top for automated assembly
- No tools required
- Finger pressure battery release



Mounting Detail



MATERIAL:

Contacts: .008 (.20) Phosphor Bronze, Nickel Plate

Base: High Temp Nylon 46, UL Rated 94V-0

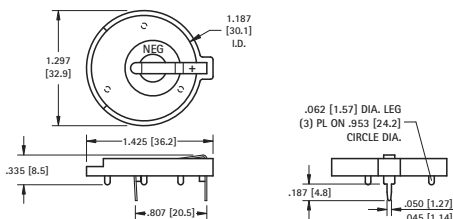
Operating Temperature: -60°F to +293°F (-51°C to +145°C)

CAT. NO.	L	C	BATTERY REFERENCE
1053	.788 (20.0)	.048 (1.2)	(1) CR2450

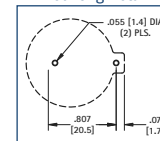
30mm



Thru Hole Mount



Mounting Detail



MATERIAL:

Contacts: .020 (.50) Spring Steel, Tin-Nickel Plate

Base: PBT, UL Rated 94V-0

Operating Temperature: -60°F to +293°F (-51°C to +145°C)

CAT. NO.	BATTERY REFERENCE
301	BR3032