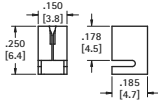


SMT QUICK-FIT FEMALE TERMINALS

AVAILABLE ON TAPE AND REEL



ACCEPTS ALL TABS
VERTICAL OR HORIZONTAL ENTRY



SPECIFICATIONS

Material: .016 (.41) Brass, Tin-Nickel Plate
Current Rating: 15 Amps @ 500V AC

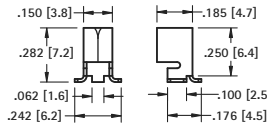
CAT. NO. 3584 (Bulk)

CAT. NO. 3584KTR (Tape & Reel)

Tape & Reel Spec's: 16mm wide, 12mm pitch, 13 inch reel (750 pieces per reel)

ACCEPTS ALL TABS
VERTICAL OR HORIZONTAL ENTRY

KTR parts have Kapton Tape added to top surface for vacuum pick & place



SPECIFICATIONS

Material: .016 (.41) Brass, Tin-Nickel Plate
Current Rating: 15 Amps @ 500V AC

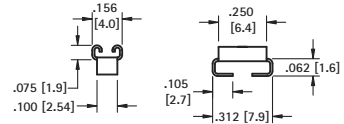
CAT. NO. 3586 (Bulk)

CAT. NO. 3586KTR (Tape & Reel)

Tape & Reel Spec's: 16mm wide, 12mm pitch, 13 inch reel (750 pieces per reel)



ACCEPTS .110 (2.8) × .032 (.81) TAB
HORIZONTAL ENTRY



SPECIFICATIONS

Material: .012 (.30) Brass, Matte Tin Plate
Current Rating: 15 Amps @ 500V AC

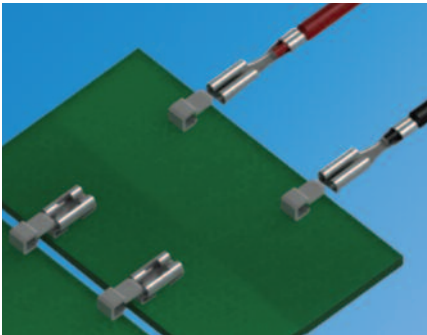
CAT. NO. 3569 (Bulk)

CAT. NO. 3569TR (Tape & Reel)

Tape & Reel Spec's: 24mm wide, 8mm pitch, 13 inch reel (2000 pieces per reel)

SMT .110 (2.8) TAB EDGE CONNECTOR

AVAILABLE ON TAPE AND REEL



CAT. NO. 3579 Bulk

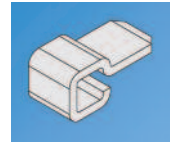
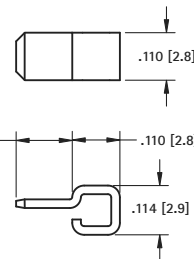
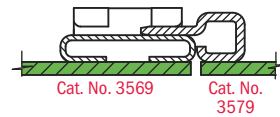
CAT. NO. 3579TR (Tape & Reel)

Tape & Reel Spec's: 24mm wide, 8mm pitch, 13 inch reel (1000 pieces per reel)

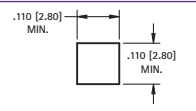
- Designed to pass signals or voltage across boards
- Generous lead-in guide aid in board assembly
- Designed to be used with **Cat. No. 3569**
- .110 tab design also allows standard crimp terminals to be used, see page 70
- Compatible with most automated assembly processes

SPECIFICATIONS

Material: Brass, Tin Plate
Current Rating: 10 Amps
Operating Temperature: -40°F to +257°F (-40°C to 125°C)
Life: 100 cycles

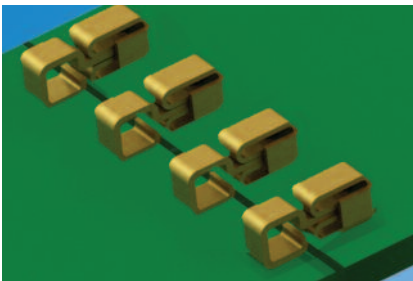


Pad Layout

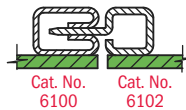


SMT LOW PROFILE EDGE CONNECTORS

AVAILABLE ON TAPE AND REEL



- Designed to pass signals or power across boards
- Generous lead-in guide aid in board assembly
- Gold plating provides superior solderability as well as low contact resistance
- Compatible with most automated assembly processes



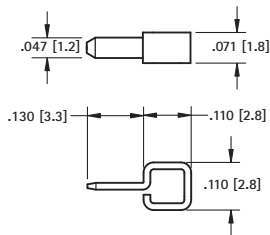
Cat. No. 6100

Cat. No. 6102

SPECIFICATIONS

Material: Phosphor Bronze, Gold Plate
Current Rating: 10 Amps
Operating Temperature: -40°F to +257°F (-40°C to 125°C)
Life: 100 cycles

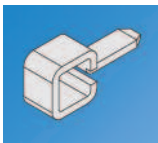
SMT EDGE PIN



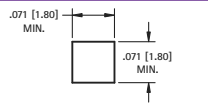
CAT. NO. 6100 Bulk

CAT. NO. 6100TR (Tape & Reel)

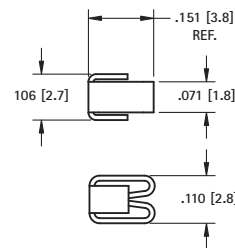
Tape & Reel Spec's: 16mm wide, 8mm pitch, 7 inch reel (500 pieces per reel)



Pad Layout



SMT EDGE SOCKET



CAT. NO. 6102 Bulk

CAT. NO. 6102TR (Tape & Reel)

Tape & Reel Spec's: 12mm wide, 4mm pitch, 7 inch reel (500 pieces per reel)



Pad Layout

