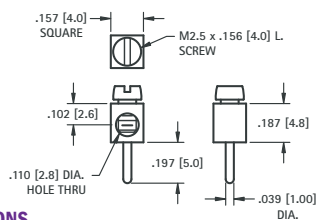


MINI BINDING POSTS



THRU HOLE



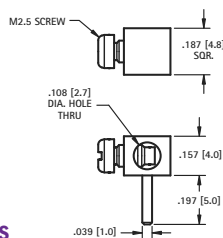
SPECIFICATIONS

Terminal: Brass, Tin Plate
Screw: Steel, Zinc Plate
Mounting Hole: .047 (1.2)
Current Rating: 15 AMP

CAT. NO. 8730 (Screw Installed)



HORIZONTAL

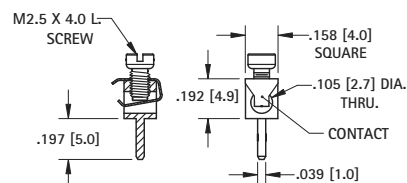


SPECIFICATIONS

Terminal: Brass, Tin Plate
Screw: Steel, Zinc Plate
Mounting Hole: .047 (1.2)
Current Rating: 15 AMP

CAT. NO. 8734 (Screw Installed)

WIRE CONTACT



SPECIFICATIONS

Terminal: Brass, Tin Plate
Screw: Steel, Zinc Plate
Contact: Phosphor Bronze, Tin Plate
Mounting Hole: .047 (1.2)
Current Rating: 15 AMP

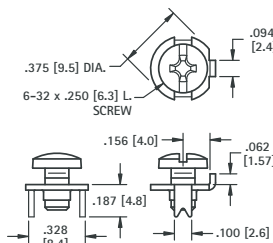
CAT. NO. 8737 (Screw Installed)

LOW PROFILE SCREW TERMINALS

These sturdy, low cost screw terminals, feature an anti-rotation tab for use with spade terminals. They are available with the screw installed and captivated, the screw unassembled or without a screw.



6-32



SPECIFICATIONS

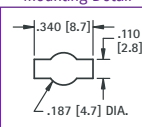
Rated: 15 Amps
Terminal: .032 (.81) Brass, Matte Tin Plate
Screw: Stainless Steel

CAT. NO. 1284 (No Screw Supplied)

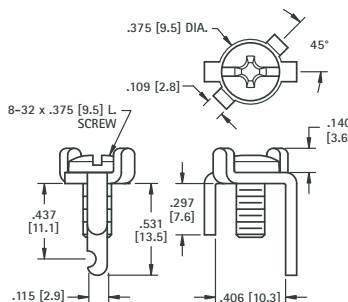
CAT. NO. 1298 (Screw Supplied Unassembled)

CAT. NO. 1201 (Screw Installed & Captivated)

Mounting Detail



8-32



SPECIFICATIONS

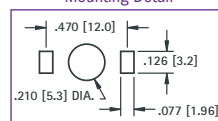
Rated: 15 Amps
Terminal: .064 (1.6) Brass, Matte Tin Plate
Screw: Brass, Nickel Plate

CAT. NO. 1205 (No Screw Supplied)

CAT. NO. 1207 (Screw Supplied Unassembled)

CAT. NO. 1209 (Screw Installed)

Mounting Detail

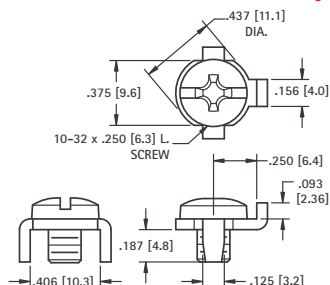


HEAVY DUTY SCREW TERMINALS - 30 AMP

These heavy duty terminals are available with the screw installed or unassembled, and feature easy access to connect solid or stranded wire, crimp type lugs or terminals.



10-32



SPECIFICATIONS

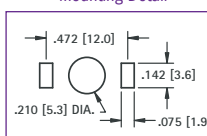
Rated: 30 Amps
Terminal: .062 (1.6) Brass, Matte Tin Plate
Screw: Stainless Steel

CAT. NO. 1293 (No Screw Supplied)

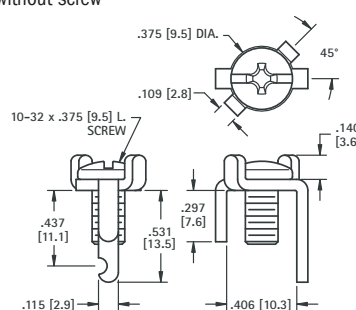
CAT. NO. 1299 (Screw Supplied Unassembled)

CAT. NO. 1202 (Screw Installed & Captivated)

Mounting Detail



10-32



SPECIFICATIONS

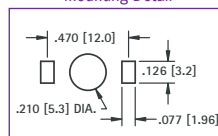
Rated: 30 Amps
Terminal: .064 (1.6) Brass, Matte Tin Plate
Screw: Steel, Nickel Plate

CAT. NO. 1206 (No Screw Supplied)

CAT. NO. 1208 (Screw Supplied Unassembled)

CAT. NO. 1283 (Screw Installed)

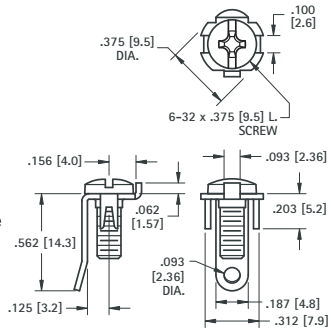
Mounting Detail



SCREW TERMINALS



OFFSET LEG

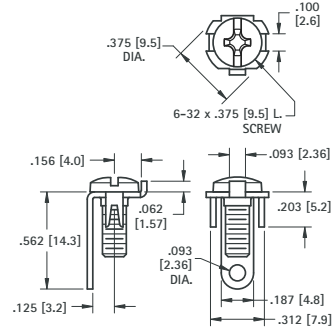


SPECIFICATIONS

Terminal: .032 (.81) Steel, Tin Plate
Screw: Steel, Nickel Plate
 (Screw Installed & Captivated)
Rated: 15 Amps

CAT. NO. 1248

STRAIGHT LEG



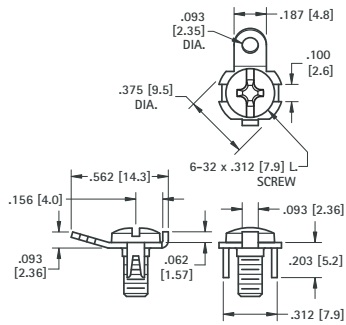
SPECIFICATIONS

Terminal: .032 (.81) Steel, Tin Plate
Screw: Steel, Nickel Plate
 (Screw Installed & Captivated)
Rated: 15 Amps

CAT. NO. 1215



SOLDER TAB

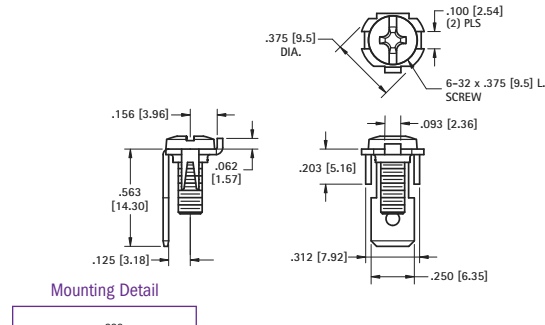


SPECIFICATIONS

Terminal: .032 (.81) Steel, Tin Plate
Screw: Steel, Nickel Plate
 (Screw Installed & Captivated)
Rated: 15 Amps

CAT. NO. 1232

QUICK FIT



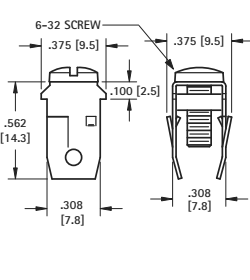
SPECIFICATIONS

Terminal: .032 (.81) Brass, Tin Plate
Screw: Steel, Nickel Plate
 (Screw Installed & Captivated)
Rated: 15 Amps

CAT. NO. 1217



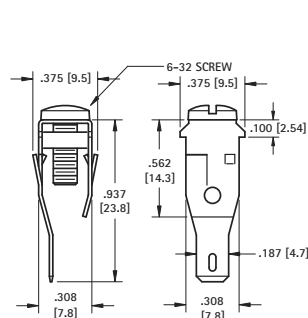
SOLDER



SPECIFICATIONS

Terminal: .020 (.51) Steel, Tin Plate
Screw: Steel, Zinc Plate,
 (Screw Installed & Captivated)
Rated: 15 Amps

CAT. NO. 1272

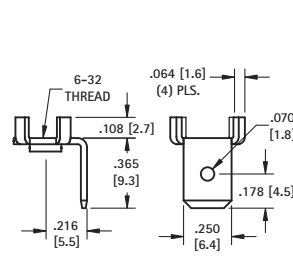


SPECIFICATIONS

Terminal: .020 (.51) Steel, Tin Plate
Screw: Steel, Zinc Plate,
 (Screw Installed & Captivated)
Rated: 15 Amps

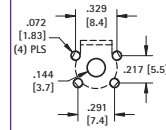
CAT. NO. 1273

QUICK-FIT



Supplied Unassembled

Mounting Detail



SPECIFICATIONS

Material: .032 (.81) Brass, Nickel Plate
Rated: 15 Amps

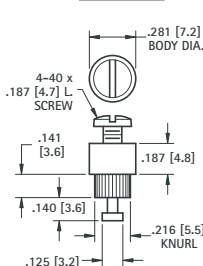
CAT. NO. 1247 (No Screw Supplied)

CAT. NO. 1251 (Screw Supplied)

BINDING POST TERMINALS (RIVET TYPE)

SPECIFICATIONS Terminal: Brass, Tin Plate **Screw:** Steel, Zinc Plate (Screw Supplied Unassembled)

4-40

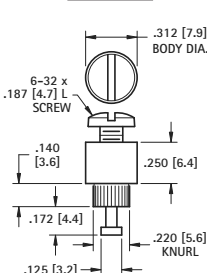


Mounting Hole: .220 (5.6)

CAT. NO. 1537

FOR .093 (2.38) BOARD

6-32

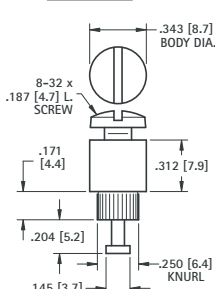


Mounting Hole: .225 (5.7)

CAT. NO. 1535

FOR .093 (2.38) BOARD

8-32



Mounting Hole: .255 (6.5)

CAT. NO. 1536

FOR .125 (3.2) BOARD